

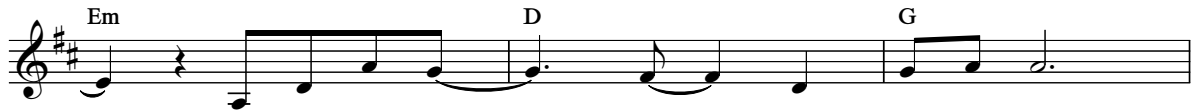
Khua a dei. Kan i tim cang,  
I cin - ken, Kan zulh ah - cun



Thawng - tha chim ah kan kal lai. Khua a  
Lung - lawmh - nak kan hmu hna lai. Je - ho -



hung dawm i, Ruah siam-siam a hung sur.  
vah nih hmuh Kan i zuam - nak vial - te,



Nuam tuk lai inn chung i sia - rem te'n  
Dawt - nak kan langh - ter - mi aa cin - ken;



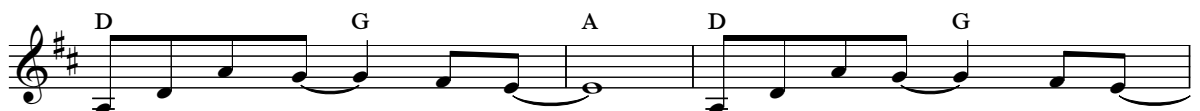
Ih ko cu. A tha - mi lung - put he timh - tuah - nak,  
Ti kan hngalh.



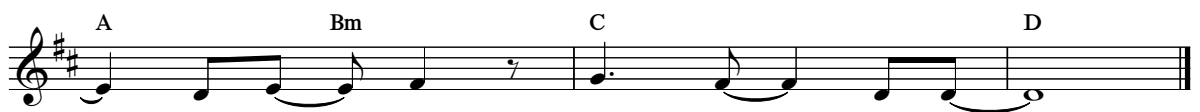
Hlawh-tlin ding thla - cam - nak; Hi ban - tuk forh - fial - nak hna kan herh,



Kan herh tak - tak. Van - cung-mi nih lam an kan hmuh - sak,



Je - suh nih a fial hna. Kan - mah lawng si lo, hawi -



kom nih bawmh, Tlu bal lai lo.