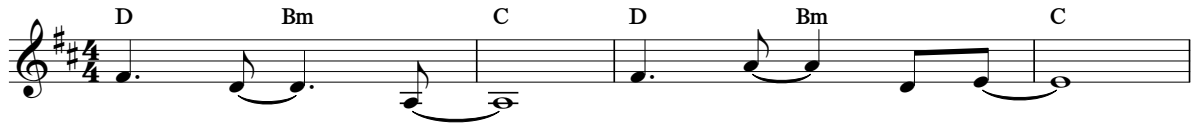


Eriytheghekeru Erithulira

(Yeremia 1:17)



Bu - ka - kya, Ka - ndi thu - li
E - tse - me Yi - ka - ya - sa



B'e - ri - ya - thu - lha ngu - lhu. Bu - ki-
E - byo thwa - ma - bi - ko - lha. Ka - ndi



ni - ri - re, N'e-mbu - lha i - ya - wa.
Ye - ho - va A - na - bi - lha - ngi - re,



Ni kyo - lho i - thwe e - ri - su - ba,
A - ni - bu - ki - re lhwa - nzo lhwe - thu;



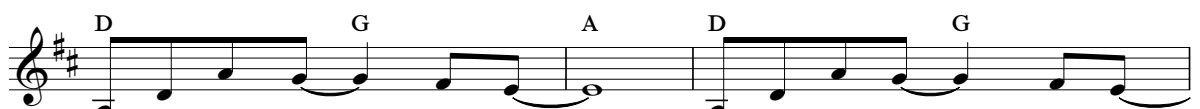
mwa thu-lho. E - ri - the - ghe - ka; N'e - ri - sa - ba,
thu - na - si.



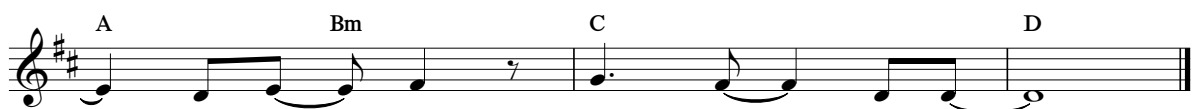
Thu-ka - bi - yi - tha - gha; I - kya - thu - ha o - mu - hwa nde - ke,



I - thwa - tho - ka. Thwa - ko - lha n'a - ba - ma - la - i - ka.



Ba - thu - mwa na Ye - su. O - mw'i - ko - lha n'a - ba -



li - kye - thu, Thu - ka - tho - ka.