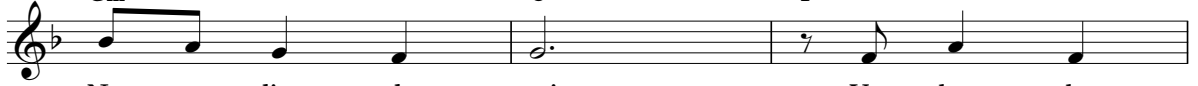


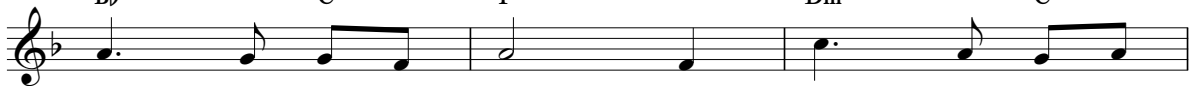
(Dwɔn 15:13)

Capo fret 3
D
FA
CBm7
Dm7Gyi - ho - va,
Ye - ku - loO ye Ze,
wɔ nye - leE - nee ye -
Nee wɔ ε -F#m
AmG
BbD
Fle - mi - nli.
lo - le ne.E - bo - le
Ye - ku - loa - fo - le
wɔ du - ma,Em
GmA
CD
FNa ε - lie - le ye!
wɔ a - go - nwo - le.Ye - ba - bo
E Ra neA
CBm
DmF#m
Ammɔ - de - nle
ra - wu - leYea - ye mɔ
A - maa yea -ε - ku - lo.
nyia ngoa - ne.G
BbD
FEm
GmNa yea - bo - ye no - lo
E - hye so - nle bo - leYea - maa me - nli a -
Te - la de - bie bia -A
C

Nliezo

D
FG
BbA
CBm
Dmde.
la.

E - va - le ε Ra ne E -

G
BbA
CD
FBm
DmA
C

bo - le a - fo - le.

Ye - to nwo - le e -

G
BbEm7
Gm7G
BbA7
C7

dwe - ne,

ye - nre - gya - kyi

ye ε - do -

Evale E Ra Kokye Ne Emaanle

1.2. *Adwulalee*

D D D
F F F

le. Gyi - ho - va,

A C Bm7 Dm7 F#m Am
C

O ye Ze, ye nye so mo wo - ye.

G D Em7 Gm7
Bb F

E - maa - nle e ra ne ra - wu - le, ye -

A7 D
C7 F

ye wo mo.