

*I Zuam U*

(Matthai 9:37, 38)

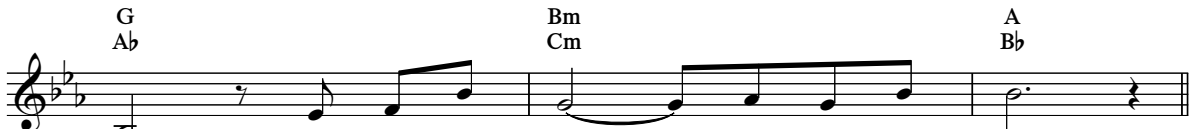
Capo fret 1



Nuamh - nak, hlawh - tlin - nak hmuh - nak lam Je - ho - vah  
Hmun - kip ah t̄uan awk rian a um. A herh - nak  
Lam nai si - seh, lam hla si - seh, Kan zoh - kenh



nih a hngalh ca - ah, A rian - t̄uan - nak ah a herh -  
hmun ah kan bawmh hna. Zuam - nak in sia - herh - nak langh -  
hna, tha kan pek hna. Mi - kip nih thawng - t̄ha an theih



mi Lam a phun - phun a kan hmuh - sak.  
ter. Bawmh kan duh hna, chimh kan duh hna.  
khawh Nak - hnga ram - dang holh hna kan cawng.



Chorus I zuam u, i pe u, kan Pa - thian ca - ah.



A herh deuh - nak hmun ah kan kal lai,



dawt - nak langh - ter in.