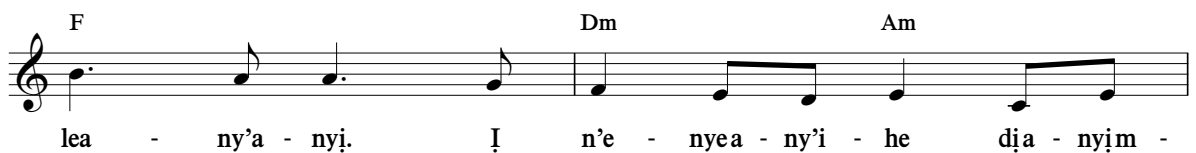
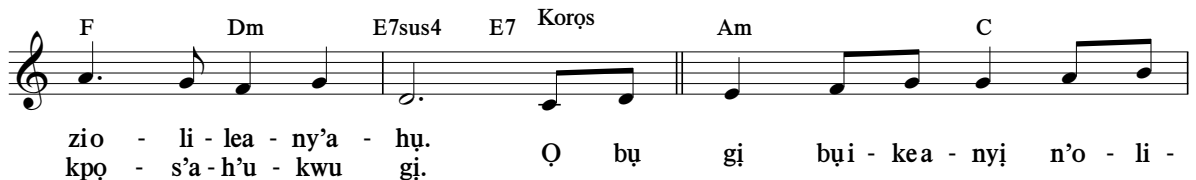
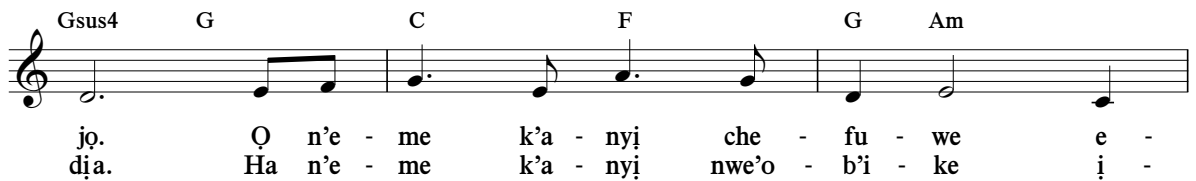
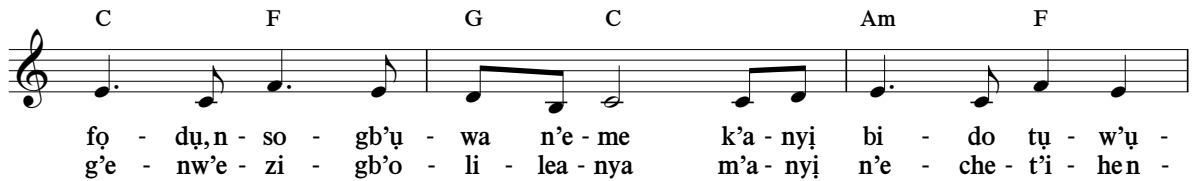
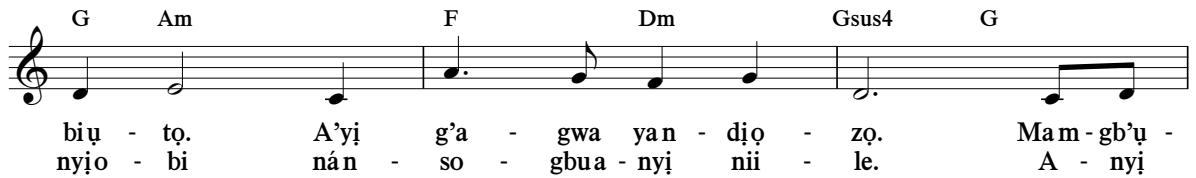
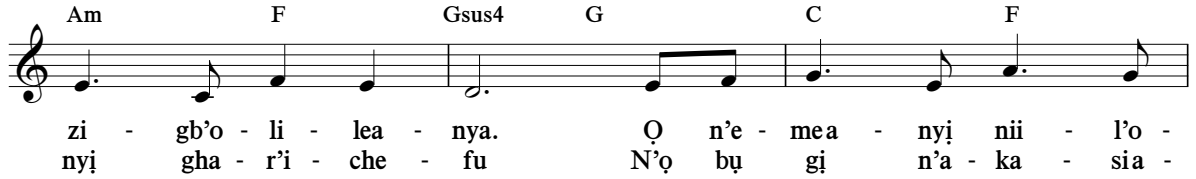
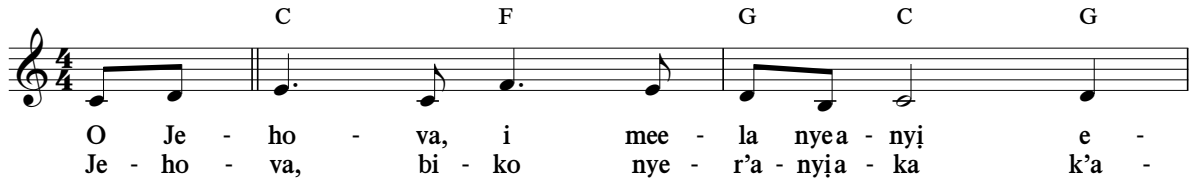


152 *I Bụ Ike Anyị, Olileanya Anyị, na Obi Ike Anyị*

(Ilu 14:26)



I Bụ Ike Anyị, Olileanya Anyị, na Obi Ike Anyị

Chords: B♭, F, Gsus4, Am, C, F, Dm, C, F, Em, C

Lyrics: kpa. A - nyị n'è - jio - b'ì - ke e - kwu - s'ò - zìọ - ma n'ì - hi n'ọ bụ gị n'è - dua - nyị.