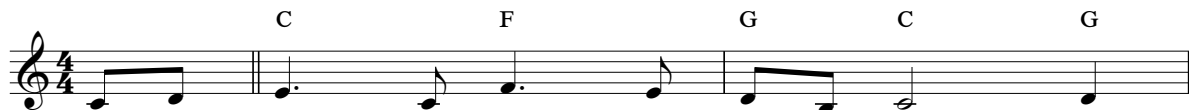
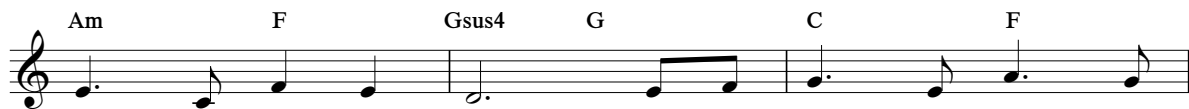


# 152 *Amon Kusog, Paglaom, Ginsasarigan*

(Proberbios 14:26)



Pag - la - om nga ha - tag mo, O Jah, pres -  
O Je - ho - va, bu - li - gi ka - mi ma -



yo - so ha a - mon. I - to na - ka - ka - ag -  
hi - num - dom pir - me, Nga i - kaw nag - li - li -



hat gud; ig - sa - sang - yaw na - mon. U - sa -  
aw kon ka - mi nag - ku - ku - ri. Ngan i -



hay ka - mi na - ha - had - lok tu - ngod ha ka - ba - ra -  
ni na - ka - ka - li - pay gud kon ka - mi nan - lu - lu -



ka, Ma - rig - on man an pag - la - om tig -  
ya; Nag - ka - ka - a - da ka - i - sog i -



da nan - lu - lu - ya. Am' ku - sog, pag - la - om, gin - sa -  
pa - ki - la - la ka.



sa - ri - gan. Ka - mi gin - bu - bu - li - gan

*Amon Kusog, Paglaom, Ginsasarigan*

B $\flat$  F Gsus4 Am C F Dm

mo. May kom - pyan - sa ha pag - sang - yaw ha ta - nan kay

Detailed description: This musical staff is written in treble clef. It begins with a B-flat chord. The melody consists of a half note G, followed by a quarter note A, a quarter note B, and a quarter note C. The next measure contains a Gsus4 chord and a half note G. The following measure has an Am chord and a half note A. The next measure has a C chord and a half note C. The final measure has an F chord and a half note F. The piece concludes with a Dm chord and a half note D.

C F Em C

na - sa - rig gud ha i - mo.

Detailed description: This musical staff is written in treble clef. It begins with a C chord and a half note C. The next measure has an F chord and a half note F. The piece then changes to a 2/4 time signature, with a half note G and a half note A. The final measure changes to a 4/4 time signature, with a C chord and a half note C. The piece ends with a double bar line.