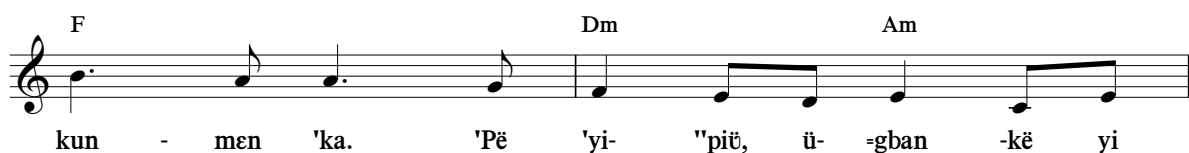
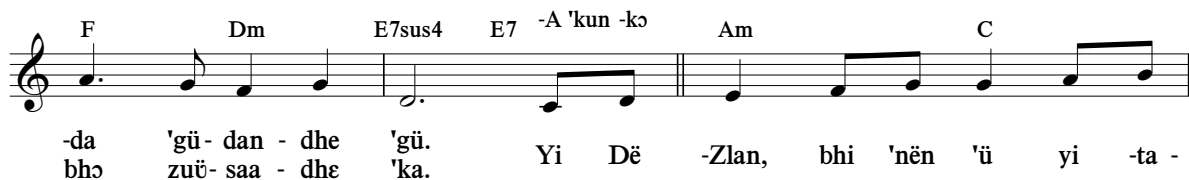
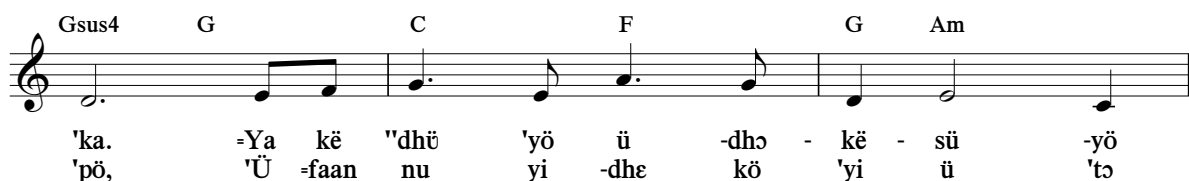
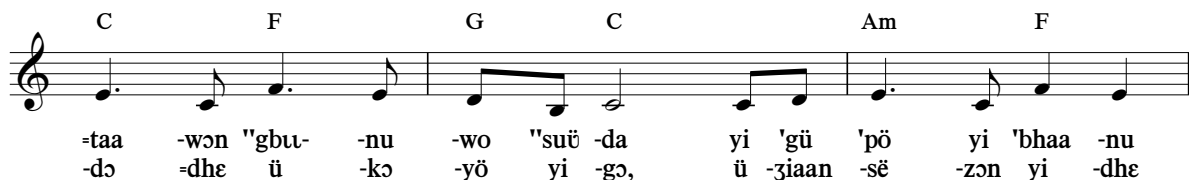
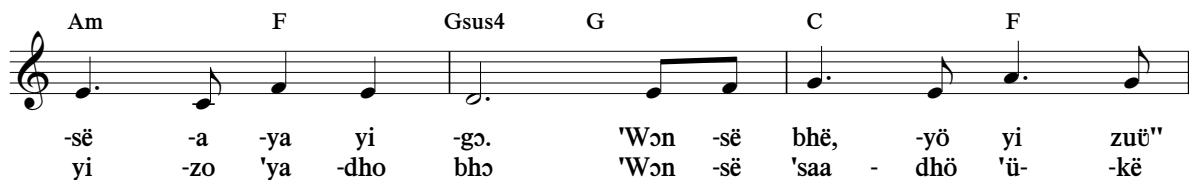
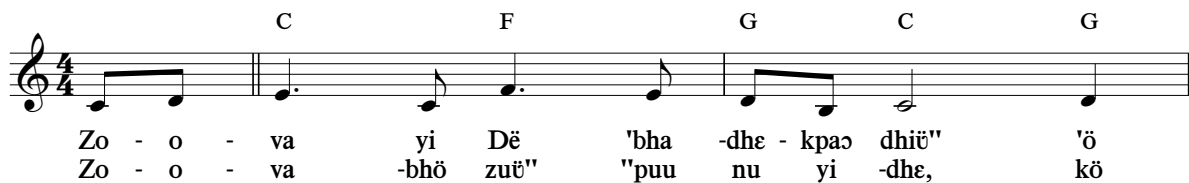


# 152 Yi =faan, yi -zoyödhemen, 'ö yi -zo -gban

(Proverbs 14:26)



*Yi =faan, yi -zoyödhemen, 'ö yi -zo -ghan*

Chords: B♭, F, Gsus4, Am, C, F, Dm, C, F, Em, C

Lyrics: -dhe. Yi -zlan - wo - pö, 'yi men -nu =klaŋ -kë, 'ö "suü 'yaa  
 yi kë 'yö -tə ü yi -zlöö.