

Hlayisa Khadi Leri

Ri tseme, ri petse hi le xikarhi kutani u ri hlayisa



MUXE

KHADI RA
BIBELE

21



SWIVUTISO

A. Hi tihi tibuku ta Bibelet leti Yehovha a huhu-teleke Muxe leswaku a ti tsala?

B. Mavito ya vatswari va Muxe a ku ri ____ na _____. U tekiwe hi _____.

C. Hetisa xiga lexi xa le Bibeleni: Muxe “[u hambete] a tserhama onge . . .”

98 C.E.

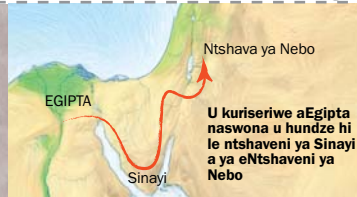
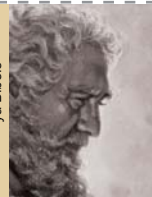
Ku tsariwa ka
buku yo hetelela
ya Bibelet

1 C.E.

U hanve kwalomut
ka va-1500 B.C.E.

4026 B.C.E.

Ku vumbiwa
ka Adamu



MUXE

MATIMU Muxe i munhu wo sungula eBibeleni loyi Xikwembu xi n'wi nyikeke matimba yo endla masingita naswona a a ri muprofeta wa Xikwembu tlhelo muavanyisi, munyiki wa nawu ni murhangeri wa le Israyele wa khale. Vaisrayele a va n'wi teka tanihi wanuna loyi a endleke swilo swo tala swo hlamarisa.—Deteronoma 34:10-12; Eksoda 4:1-9.

TINHLAMULO

A. Genesa, Eksoda, Levhitika, Deteronoma, Yobo swin'we na Pisalema 90 kumbexana na Pisalema 91.

B. Amirama, Yokebedi, n'wana wa Faro wa nhwanyana.—Eksoda 1:15-2:10; 6:20.

C. “. . . onge hiloko a vona Loyi a nga vonakiki.”—Vaheveru 11:27.