

ULote

ULOTE

IKHADI LEBHAYIBHILE

27



IMIBUZO

- A.** Yinyaniso okanye bubuxoki? ULote wayelihlwe-mpu. —Genesis 13:5, 6.
- B.** ULote wagqiba ukuba uza kuhlala kummandla waseSodom kuba 'wawunjengo_____ kaYehova.' —Genesis 13:10, 11.
- C.** Ngaphambi kokuba uYehova atshabalalise iSodom, uLote wabalekela kwisixeko sase_____. —Genesis 19:23, 24.

Malunga no-98 C.E. 1 C.E. 4026 B.C.E.

Incwadi yeBhayibhile yokugqibela ukubhalwa Waphila malunga no-1900 B.C.E. UAdam uyadalwa



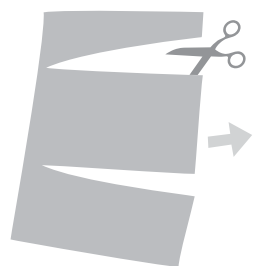
U L O T E

INGXELO YOBOMI ULote ngumtshana ka-Abrham kwaye wayehlala kwisixeko saseSodom. Nangona “abantu baseSodom babengabenzi bobubi yaye babengaboni abakhulu kuYehova,” yena uLote ‘wayelilungisa.’ (Genesis 13:13; 2 Petros 2:7, 8) Xa uYehova watshabalalise iSodom, wasindisa uLote kunye neentombi zakhe ezimbini. Okubuhlungu kukuba umfazi wakhe akazange amthobele uYehova waza watshabalala.

IIMPENDULO

- A.** Bubuxoki. Izinto uLote awayenazo ‘zaba ninzi.’
- B.** myezo.
- C.** Tsware.

PRINTA



ULISIKE



ULIGOBE



UZE ULIGCINE

