

ULoti



ULOTI

IKHADI LEBHAYIBHELI

27

IMIBUZO

- A.** Iqiniso noma amanga? ULoti wayengumuntu ompofu.—Genesisise 13:5, 6.
- B.** ULoti wakhetha ukuhlala endaweni eyakhelele neSodoma ngoba ‘yayinjenge_____ kaJehova.’ —Genesisise 13:10, 11.
- C.** Ngaphambi kokuba uJehova abhubhise iSodoma, uLoti wabalekela emzini wase_____.—Genesisise 19:23, 24.

1 C.E. Cishe ngo-98 C.E.

Kwalotshwa inewadi yokugcina yeBhayibheli



Wahlala e-Uri, eHarana, eKhanani, eGibhithe naseSodoma

ULOTI

UMLANDO ULoti, indodana yomfowabo ka-Abraham, wayehlala emzini waseSodoma. Nakuba “amadoda aseSodoma ayamabi futhi eyizoni ezinkulu kuJehova,” uLoti ‘wayengumuntu olungileyo.’ (Genesisise 13:13; 2 Petru 2:7, 8) Lapho uJehova ebhubhisa iSodoma, wamlondoloza uLoti namadodakazi akhe amabili. Ngokudabukisayo, umkaLoti akamlalelanga uNkulunkulu ngakho akasindanga.

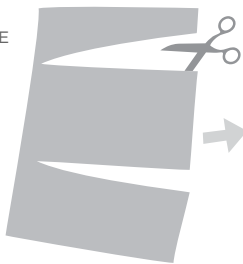
IZIMPENDULO

- A.** Amanga. ‘Impahla kaLoti yayisiningi.’
- B.** insimu.
- C.** eZowari.

4026 B.C.E.

Ukudalwa kuka-Adamu

LIPRINTE



ULISIKE



ULIGOQE



BESE ULIGCINA

