

# Mariya

## MARIYA

KHADI LA  
M'BAIBULO

25



### LEMBANI MAWU AMENE AKUSOWEKAPO

**A.** Mngelo \_\_\_\_\_ anapita kwa Mariya pamene ankakhala mumzinda wa \_\_\_\_\_.—Luka 1:26, 27.

**B.** Yesu atakwanitsa masiku 40, Mariya anapita naye kukachisi ndipo anakapereka “\_\_\_\_\_ ziwiri kapena ana awiri a \_\_\_\_\_.”—Luka 2:22-24.

**C.** “Mariya anasunga mawu onsewa ndi kuganizira tanthauzo la zimenezi \_\_\_\_\_.”—Luka 2:19.

m'ma 98 C.E.

1 C.E.

Buku lomaliza la m'Baibulo linalembedwa

Anabadwa kumapeto kwa zaka za m'ma B.C.E. n'kumwalira nthawi ya atumwi.

4026 B.C.E.

Kulengedwa kwa Adamu



Mariya anakhalapo ku Nazareti, ku Betelehemu ndi ku Iguputo

## MARIYA

**ANALI NDANI?** Mariya anali mayi a Yesu. Iye anali wosauka koma chaka chilichonse ankapita ku Yerusalem kukachita nawo Pasika. (Luka 2:41) Iye anadzakhala wophunzira wa Yesu. Patapita nthawi, ana ake anadzakhalanso ophunzira a Yesu. (Machitidwe 1:14) Baibulo limanena kuti 'Mulungu anakomera mtima' Mariya.—Luka 1:30.

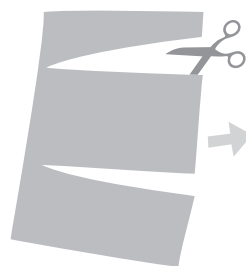
### MAYANKHO

**A.** Gabirieli, Nazareti.

**B.** njiwa, nkunda.

**C.** mumtima mwake.

SINDIKIZANI



DULANI



PINDANI PAKATI



SUNGANI

