

# Malia

## MALIA

### YĚDIDE

# 25



#### YÍ HOGBE HE WHÈ LĚ DOGỌ

- A.** Angẹli \_\_\_\_\_ yì Malia dè to whenue e tin to tòdaho \_\_\_\_\_ tọn mẹ.—Luku 1:26, 27.
- B.** To whenue Jesu do azán 40, Malia yì tẹmpli mẹ bo sanvò “\_\_\_\_\_ awe kavi \_\_\_\_\_ awe” tọn.—Luku 2:22-24.
- C.** “Malia yí onú ehe lẹpo whlá do ayiha mẹ bo to nulẹpọn do nuhe onú ehele zẹmẹdo ji to \_\_\_\_\_.”—Luku 2:19.

Nudiome 98 W.M.

Owhe 1 W.M.

4026 J.W.M.

Owe he gbonḡdo to Bbilu mẹ yin kinkan

Nogbo to owhe kanwéko tintan J.W.M. po W.M. tọn po mẹ.

Adam yin didá



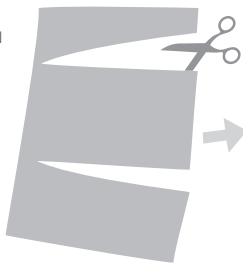
## MALIA

**OTÀN** Malia yin onọ Jesu tọn. Dile etlẹ yindọ Malia yin wamọṅo, e nọ zingbejizonlin yì Jelusalẹm to owhe dopodopo mẹ nado basi hùnwhẹ Juwayi tọn. (Luku 2:41) Malia lẹzun devi Jesu tọn, podọ to godo mẹ visunnu etọn he pò lẹ lọsu lẹzun devi Jesu tọn lẹ. (Owalọ lẹ 1:14) Biblu dọ dọ “Jiwheyewhe ko do nukundagbe hia” Malia.—Luku 1:30.

#### GBLỌNDO LĚ

- A.** Gabliẹli, Nazaleti.
- B.** owhlé, awhànnevú.
- C.** ahun etọn mẹ.

ZIN IN TỌN



SÁN ẸN



YĚN ẸN DO AWE



BO Sẚ ẚ DO

