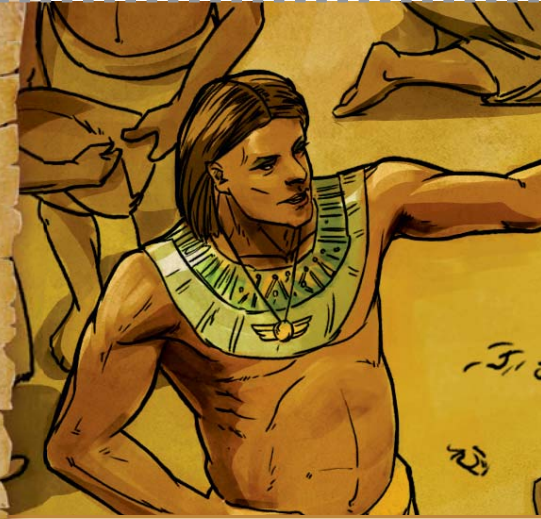


Potifara

POTIFARA

KARATA YA BEIBELE

29



DIPOTŠIŠO

- A.** Potifara o rekile Josefa go bomang gore e be lekgoba la gagwe?—Genesi 37:36; 39:1.
- B.** Therešo goba maaka? Potifara o ile a gafela Josefa mo e ka bago dilo ka moka tša ntlong ya gagwe gore a di hlokomele.—Genesi 39:8, 9.
- C.** Ge mosadi wa gagwe a be a boletše maaka ka Josefa, Potifara o ile a “tuka _____.” —Genesi 39:19.

Mo e le bago ka 98 C.E.

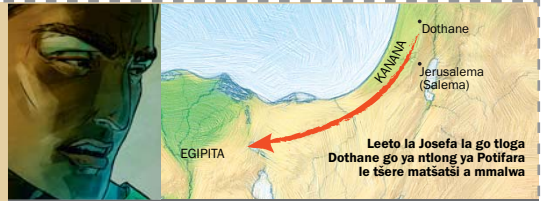
1 C.E.

Puku ya mafelolelo ya Baibele e a ngwalwa

O phetše mo e ka bago ka 1750 B.C.E.

4026 B.C.E.

Adama o a bopša



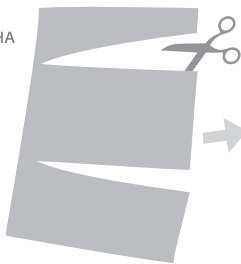
POTIFARA

KANEGELO YA BOPHELO BJA GAGWE Potifara, e lego mohlankedi wa kgoro ya Egipita le molaodi wa bahlapetši ba Farao, e be e le mong wa Josefa. Ka morago ga gore Potifara a bee Josefa gore a okamele dilo tša gagwe ka moka, Jehofa o ile a šegofatša ba ntlona ya Potifara. (Genesi 39:5) Lega go le bjalo, ge mosadi wa Potifara a be a bolela maaka ka Josefa, Potifara o ile a mo lahlela kgolegong.—Genesi 39:19, 20.

DIKARABO

- A.** Bamidiane goba Baishimaele.
- B.** Therešo.
- C.** bogale.

PRINTHA



SEGA



MENA KA BOGARE



GOMME O E BOLOKE

