

Potifaro

POTIFARO

KARATA YA BAEBELE

29



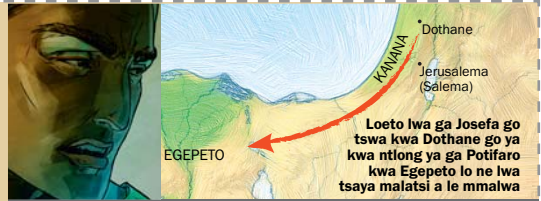
DIPOTSO

- A.** Potifaro o ne a reka Josefa mo go bomang gore a nne lekgoba?—Genesis 37:36; 39:1.
- B.** Boammaaruri kgotsa maaka? Potifaro o ne a re Josefa a tihokomele mo e batlang e le sengwe le sengwe mo ntlong ya gagwe.—Genesis 39:8, 9.
- C.** Fa mosadi wa gagwe a sena go bua maaka ka ga Josefa, '___ jwa ga Potifaro jwa tuka.'—Genesis 39:19.

Mo e ka mang ka 98 C.E. | 1 C.E. | 4026 B.C.E. | Adame o a bopiwa

Go kwalwa ga buka ya bofelo ya Baebele

O ne a tshela mo e ka mang ka 1750 B.C.E.



Loeto lwa ga Josefa go tswa kwa Dothane go ya kwa ntlong ya ga Potifaro kwa Egepeto lo ne lwa tsaya malatsi a le mmalwa

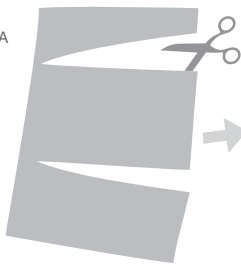
POTIFARO

DINTLHA KA GA GAGWE Potifaro, modiredi wa ntlona ya kgosi wa Moegepeto le molaodi wa bafemedi ba ga Faro, e ne e le mong wa ga Josefa. Fa Potifaro a sena go naya Josefa maemo a go okamela dilo tsothe tsa gagwe, Jehofa o ne a se-gofatsa ba ntlona ya ga Potifaro. (Genesis 39:5) Le fa go ntse jalo, fa mosadi wa ga Potifaro a sena go bua maaka ka ga Josefa, Potifaro o ne a mo latlhela mo kgolegelong.—Genesis 39:19, 20.

DIKARABO

- A.** Bamidiana kgotsa Baishemaele.
- B.** Boammaaruri.
- C.** bogale.

PRINTA



SEGOLOLA



MENA KA BOGARE



O BO O E BOLOKE

