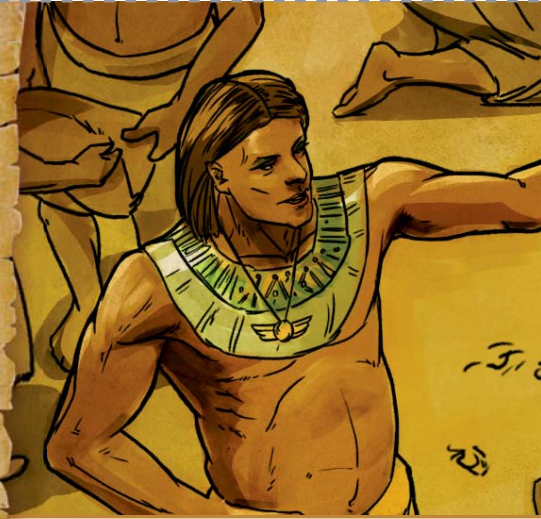


UPotifari

UPOTIFARI

IKHADI
LEBHAYIBHELI

29



IMIBUZO

- A.** UPotifari wamthenga kobani uJosefa njengesigqila?—Genesis 37:36; 39:1.
- B.** Iqiniso noma amanga? UPotifari washiyela kuJosefa cishe yonke into esendlini yakhe ukuba ayinakekele.—Genesis 39:8, 9.
- C.** Lapho umkakhe emtshela amanga ngoJosefa, '___ kaPotifari yavutha.'—Genesis 39:19.

1 C.E. Ngawo-98 C.E.

Kwalotshwa
incwadi yokugcina
yeBhayibheliWaphila cishe
ngo-1750 B.C.E.

4026 B.C.E.

Ukudalwa
kuka-Adamu

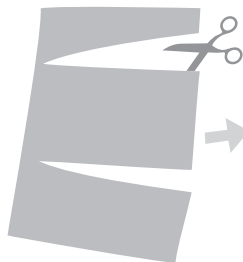
UPOTIFARI

UMLANDO WAKHE UPotifari, isikhulu segceke saseGibhithe nenduna yemilindankosi kaFaro, wayeyinkosi kaJosefa. Ngemva kokuba uPotifari ebeke uJosefa phezu kwayo yonke impahla yakhe, uJehova wayibusisa indlu kaPotifari. (Genesis 39:5) Nokho, lapho umkaPotifari eqambela uJosefa amanga, uPotifari wamfaka etilongweni uJosefa.—Genesis 39:19, 20.

IZIMPENDULO

- A.** KwabakwaMidiyani noma ama-Ishmayeli.
- B.** Iqiniso.
- C.** intukuthelo.

LIPRINTE



ULISIKE



ULIGOQE



BESE ULIGCINA

