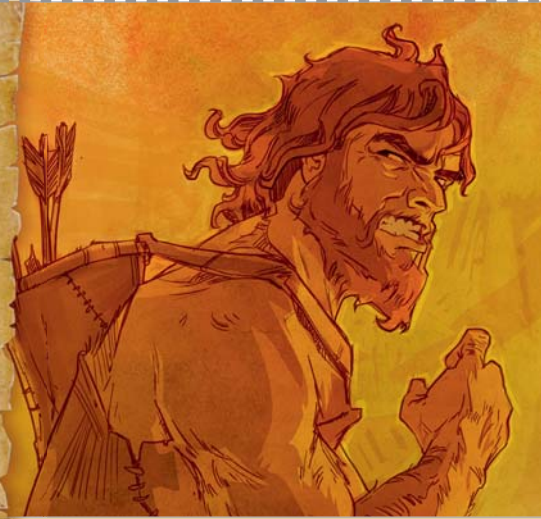


Esau

ESAU

KAKKAADI
KAMU
BBAIBBELE

26



MIBUZYO

- A.** Masimpe naa nkubeja? Esau wakali muniini ali Jakobo.—Matalikilo 25:24-26.
- B.** “Esau wakaba ____.”—Matalikilo 25:27.
- C.** “Jakobo wakapa Esau insima amusinza ____.”—Matalikilo 25:34.

1 C.E.
Kuma 98 C.E.

Bbuku Iyamamanino Iyamu Bbaibbele Iyalembwa



Baluzubo Iwa Esau bakali kukkala mu Edomu

ESAU

MAKANI AAJATIKIZYA NGUWE Esau wakali mwana wa Isaka a Rebeka. Wakacincanya bu-pati bwakwe—nkokuti cilongezyo cilibedeledede icakazwa kuli bausyi—amutiba wamusinza. Esau wakamufwida munyono Jakobo, simaanganyina, cakuti wakayanda kuti amujaye. Kwiimpana amwanookwabo, Esau taakali kuzi-bikkila maano zyintu zisetekene.—Bahebulayo 12:16.

BWIINGUZI

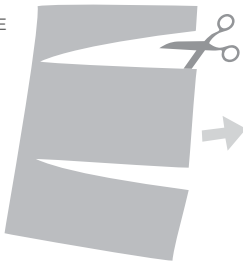
- A.** Nkubeja.
- B.** Sikuvwima.
- C.** wanyangu.

4026 B.C.E.

Wazyalwa 1858 B.C.E.

Adamu
Walengwa

AMUSIMBE



MUTENDULULE



MUKAWWUNGE AKATI



ALIMWI AKUKAYOBOLA

