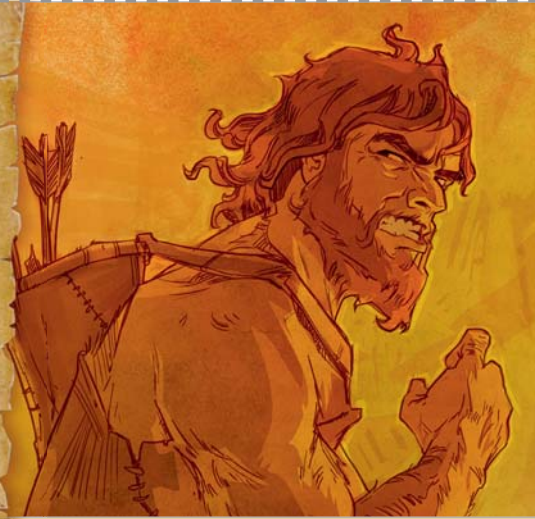


Esawu

ESAWU

KHADI RA BIBELE 26

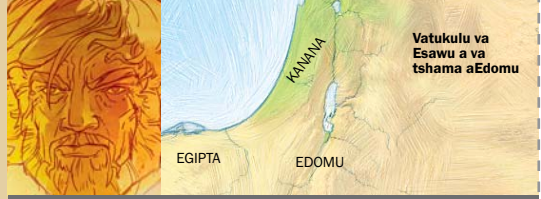


SWIVUTISO

- A.** I ntiyiso kumbe i mavun'wa? Esawu a a ri ndzisana ya Yakobe.—Genesa 25:24-26.
- B.** “Esawu a va munhu la tivaka ku_____.” —Genesa 25:27.
- C.** “Yakobe a nyika Esawu xinkwa ni _____ xa tinyawa.”—Genesa 25:34.

1 C.E. Kwalomu ka 98 C.E.

Buku ya Bibe le yo hetelela ku tsarwa



Vatukulu va Esawu a va tshama aEdomu

ESAWU

MATIMU Esawu a a ri n'wana wa Isaka na Raveka. U xavise mfanelo yakwe yo va mativula —nkateko wo hlawuleka lowu a wu huma eka tatana wakwe—hikwalaho ka xiculu xa tinyawa. Esawu u sungule ku vondzoka makwavo wakwe Yakobe, kutani a n'wi lukela rhengu ra ku n'wi dlaya. Esawu a nga swi tlangelanga swilo swo kwetsima.—Vaheveru 12:16.

U velekiwe hi 1858 B.C.E.

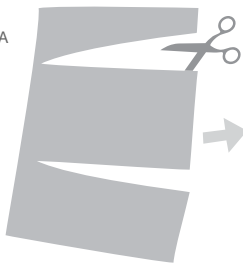
4026 B.C.E.

Ku v umbiwa lka Adamu

TINHLAMULO

- A.** I mavun'wa.
- B.** hlota.
- C.** xiculu.

PRINTA



TSEMA



PETSA HI LE XIKARHI



KUTANI U RI HLAYISA

