

# U-Esawu

## U-ESAWU

IKHADI  
LEBHAYIBHELI

26



### IMIBUZO

- A.** Amanga noma iqiniso? U-Esawu wayemncane kunoJakobe.—Genesis 25:24-26.  
**B.** “U-Esawu waba \_\_\_\_.”—Genesis 25:27.  
**C.** “UJakobe wamnika u-Esawu isinkwa nesi-tshulu \_\_\_\_.”—Genesis 25:34.

1 C.E. Cishe ngo-98 C.E.

Kwalotshwa incwadi yokugcina yeBhayibheli

Wazalwa ngo-1858 B.C.E.

4026 B.C.E.

Ukudalwa kuka-Adamu



Inzalo ka-Esawu yayihlala kwa-Edomi

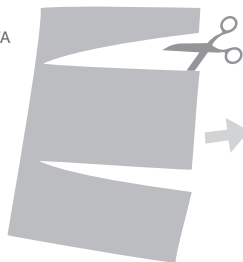
## U - E S A W U

**UMLANDO** U-Esawu wayeyindodana ka-Isaka noRebheka. Wadela ubuzibulo bakhe—isibusiso esikhethekile esivela kuyise—ngenxa yesitshulu. U-Esawu waba nomona ngomfowabo ayeyiwele naye uJakobe, kangangokuba waceba ukumbulala. Ngokungafani nomfowabo, u-Esawu wayengenandaba nezinto ezingcwele.—Hebheru 12:16.

### IMPENDULO

- A.** Amanga.  
**B.** iphisi.  
**C.** sikadali.

PRINTA



LISIKE



LIGOQE



BESE ULIGCINA

