

# Bya Kuba Umwwe Ufwabo Balunda



## 1

### YUKA KYALENGELA

Londolola kyo wabujila balunda.

.....  
.....  
.....

Nanchi bantu bo balengela'mba ubule kwikala na balunda nyi?  
Mu ñanyi jishinda?

.....  
.....  
.....

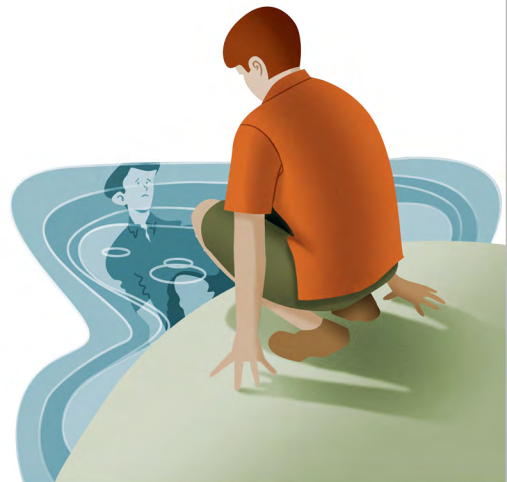


## 2

### MONA INGE YOBE WALENGELA

Ñanyi kintu kyakulengela'mba *ubule* kwikala na balunda?  
(Nanchi wilengulwisha ku bakwenu nyi? Abya ulanguluka'mba  
bakwenu baji na kanswatu nangwa'mba kechi batekanya  
nenyi?)

.....  
.....  
.....  
.....



# 3

## MUTEMBO WOBE (Ngalatiya 6:5)

Kimo kimye kechi yobe *walengela* kubula kwikala na balunda ne, pano bino ñanyi *mutembo* ye uji naye?

.....  
.....  
.....

Nembapo mazhina a *bantu* babiji bo usaka kwisamba nabo uno mulungu.

.....  
.....

Nembapo *bintu* bibiji byo usaka kuba bya kukukwasha kwikala na balunda.

.....  
.....



# 4

## BYAFUMAMO

Mulungu inge wapwa, pitulukamo umone inge paji byo waubapo. Nanchi watana balunda nyi? Umvwe ine, ñanyi kintu kyo ubena kulanguluka kuba pa kuba'mba wikale na balunda?

.....  
.....  
.....  
.....



**BYA KUBA:** *“Kitanshi kyo wafwainwa kuba umvwe keulanguluke'mba kafwako nangwa umo wakutemwa, ke kumonapo mashinda amo a kukosesheshamo bulunda bobo na bakwenu; kya bubiji isampe bulunda na bantu bakwabo; ne kya busatu bwela ku balunda bobo bakala. Kwisamba na mulunda nobe wakala kukakuletela lusekelo.”—Anne.*

Inge usaka kuyukilapo bikwabo, tanga pa intaneti, mutwe wa kuba'mba, “Banyike Bepuzha Amba— Mambo ka kyo Nabujila Balunda?” Ya pa [jw.org/kqn](http://jw.org/kqn) pa mutwe wa kuba'mba MAFUNJISHO A MU BAIBOLO > BANYIKE.