

Aalọn

AALỌN

YĚDIDE

32

KANBIỌ LĚ

- A.** Etẹwẹ Jehovah dọ gando Aalọn go? “Yẹn yọnen dọ ewọ soḡan ____ dagbedagbe.”—Eksọdusi 4:14.
- B.** Mọwẹ kavi lala? Owhe atọn wẹ Aalọn do yin mẹho na Mose.—Eksọdusi 7:7.
- C.** Aalọn lị opò etọn nude bọ nulọ diọ zun ohùn. Etẹwẹ yin nulọ?—Eksọdusi 7:19, 20.



Nudiowhe 98 W.M.

Owhe 1 W.M.

Owe lẹ gbogbo to Biblu me yin kinkan

Aalọn ngbẹ to 1597-1474 J.W.M.

4026 J.W.M.

Adam yin didá



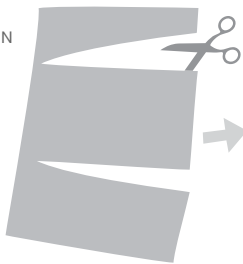
AALỌN

OTÀN Aalọn yin hoyidọtọ adọgbotọ de na nvi-sunnu etọn Mose to whenue yé omẹ awe lẹ site to Falo nukọn. To nukọn mẹ, Jehovah de Aalọn taidi yewhenọ daho tintan Israeli tọn. Dile etlẹ yindọ Aalọn sẹn Jiwheyewhe po nugbonọ-yinyin po na owhe susu, e ma na gigo Jiwheyewhe to Mẹliba. Enẹwutu, Jiwheyewhe ma dike ewọ ni biọ Aigba Pagbe tọn lọ ji.—Osọha lẹ 20:12, 13.

GBLỌNDO LĚ

- A.** Dọho.
- B.** Mọwẹ.
- C.** Tọsisa Nile.

ZÍN IN TỌN



SÁN ẸN



YẸN ẸN DO AWE



BO SẸ Ẹ DO

