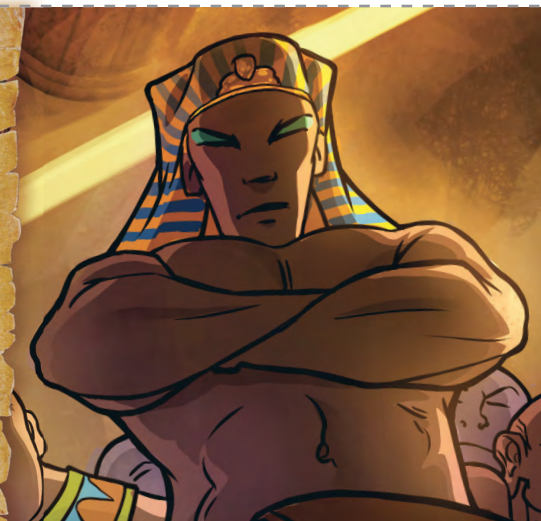


Farao (1513 B.C.E.)

FARAO (1513 B.C.E.)

KARDI

33



AMEPUSHO

- A.** Farao aipwishe ati: “Nani uyo wine _____, uwa kuti ng’umfwe ishiwi lyakwe?”—Ukufuma 5:1, 2.
- B.** Cine nelyo bufi? Farao ali uwaicefya.—Ukufuma 9:13, 17.
- C.** Ilyo baali pali Bemba Wakashika, cinshi cali pa kati ka bashilika ba kwa Farao na bena Egupti?—Ukufuma 14:19, 20.

Nalimo mu
98 C.E.

1 C.E.

Ibuuku lya
kulekesho lilya
maboko yalimbwa

Afwile mu 1513 B.C.E.

4026 B.C.E.

Adamu
abumbwaBakonkele abena Israele kabili
balifwile pali Bemba Wakashika

EGUPTI

Ntalo

Bemba Wakashika

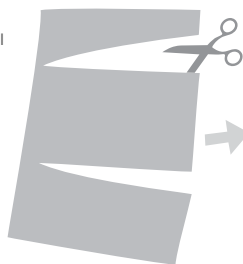
F A R A O

Farao alikeene ukumfwa ilyo Yehova amwebele ukuleka abena Israele ukuya. Ilyo Yehova aletele ifinkunka 10 pa bena Egupti, Farao asukile asuminisha abena Israele ukuya. Pa numa, abena Egupti batendeke ukukonka abena Israele. Lelo Yehova alipuswishe abena Israele ilyo alekele Farao na bashilika bakwe ukunwena pali Bemba Wakashika.—Amalumbo 136:15.

AMASUKO

- A.** Yehova.
- B.** Bufi. Farao “aleituumika.”
- C.** Intumba ye kumbi.

PULINTENI



PUTULENI



PETEKENI PA KATI



E LYO MUSUNGE

