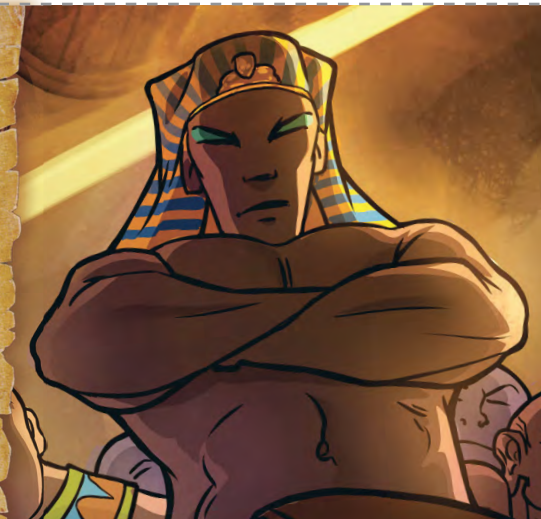


Farao (Afi 1513 D.ŋ.B.)

FARAO (AFI 1513 D.ŋ.B.)

BIBLIA
MLI SANE

33



SANEBIMƆ

- A.** Farao bi ake: “Namo ji _____, ni mabo egbee toi le?”—2 Mose 5:1, 2.
- B.** Anɔkwale loo amale? Farao baa ehe shi. —2 Mose 9:13, 17.
- D.** Ye ŋsho Tsuru le naa, meni baje Farao ta le ke Israelbii le ata le ten? —2 Mose 14:19, 20.

Aaafee afi 98 ŋ.B.

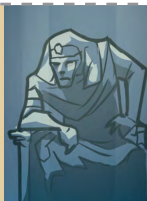
Afi 1 ŋ.B.

Naagbee Biblia
wolo ni anma

Egbo afi: 1513 D.ŋ.B.

Afi 4026 D.ŋ.B.

Abo Adam



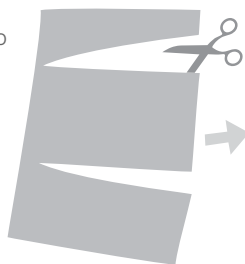
F A R A O

EHE SANE KUKU Farao efee toiboo be ni Yehowa ke ehã Israelbii le aya le. Be ni Yehowa ke haomci nyɔɔma eba Ejiptbii le anɔ sɛɛ dani Farao ŋmɛ Israelbii le ahe ni ametee. Sɛɛ mli le, Ejiptbii le tiu ame. Shi Yehowa butu Farao ke eta le ye ŋsho Tsuru le mli ni ekehere Israelbii le ayiwala.—Lala 136:15.

HETOI

- A.** Yehowa.
- B.** Amale. Farao tee no ‘ewo ehe no.’
- D.** Atatu kutuu.

PRINTIMO



FOO



DOO MLI ENYO



NI OKETO

