

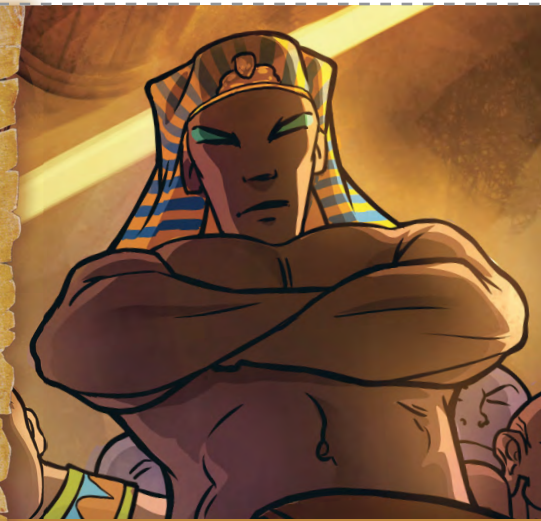
Felo (1513 B.C.E.)

(1513 B.C.E.)

FELO

KIPIKICALA

33



MEPUZHO

- A.** Felo waipwizhe'mba: “ ____ ye ñanyi kya kuba'mba ñumvwe jiwi janji?”—Kulupuka 5:1, 2.
- B.** Felo wajinga muntu wipelula. Kine nyi bube-la?—Kulupuka 9:13, 17.
- C.** Pa Kalunga Kachila, ñanyi kintu kyajinga pakachi ka nzhita ya kwa Felo ne Bena Isalela?—Kulupuka 14:19, 20.

Mu ma 98 C.E.

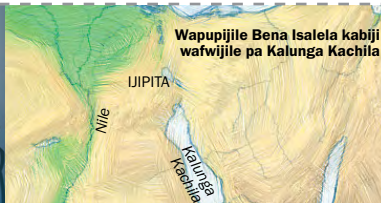
1 C.E.

Buku wapeleleko kunemba

Warwile mu 1513 B.C.E.

4026 B.C.E.

Adama bamulengele



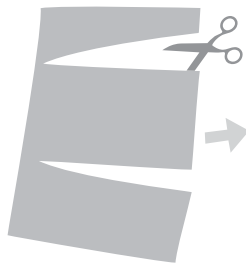
FELO

BWIKALO Yehoba waambijile Felo kukasulula Bena Isalela, pano bino wakaine. Kyapeleleko Felo wakasulwile Bena Isalela kimye Yehoba kyo aletele binkunka jikumi pa Bena Ijipita. Byopapichile kimye Bena Ijipita batatwile kupupila Bena Isalela. Pano bino Yehoba wapokolwele Bena Isalela byo alobeshe Felo ne nzhita yanji pa Kalunga Kachila.—Salamo 136:15.

MIKUMBU

- A.** Yehoba.
- B.** Bubela. Felo 'witumbijikile.'
- C.** Jikumbi jaimene mulumbulumbu.

PULINTA



CHIBA



CHIMPA



LAMA

