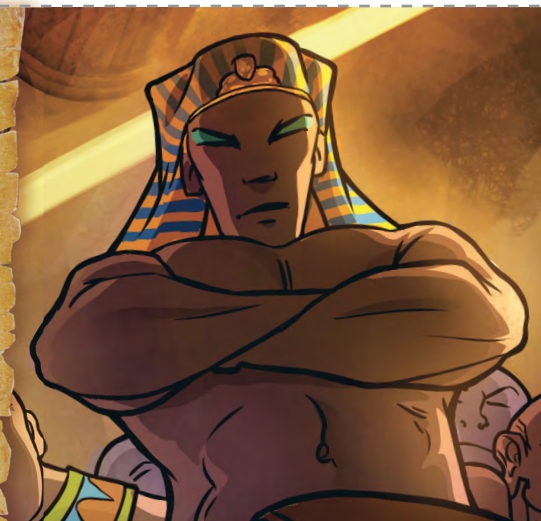


## Farao (1513 B.C.E.)

FARAO (1513 B.C.E.)

KARATA YA  
BEIBELE

33



## DIPOTŠIŠO

**A.** Farao o ile a botšiša gore: “\_\_\_\_\_ ke mang, moo nka kwago lentšu la gagwe?”—Ekisodo 5:1, 2.

**B.** Therešo goba maaka? Farao e be e le motho wa go ikokobetša.—Ekisodo 9:13, 17.

**C.** Ke eng seo se emego gare ga madira a Farao le kampa ya Baisiraele Lewatleng le Lehwebidu? —Ekisodo 14:19, 20.

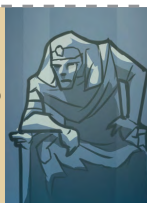
Mo e ka bago  
ka 98 C.E.

1 C.E.

Puku ya  
mafelelo ya  
Beibele e a  
ngwalwa

O hwile ka 1513 B.C.E.

4026 B.C.E.

Adama o a  
bopšaBa ile ba rakediša Baisiraele  
gomme ba hwela Lewatleng  
le Lehwebidu

EGIPITA

Nile

Lewatleng le  
Lehwebidu

## F A R A O

**KANEGELO YA BOPHELO BJA GAGWE** Farao o ile a gana go theetša ge Jehofa a be a mmošša gore a tlogele Baisiraele ba sepele. Ka morago ga gore Jehofa a tlišetše Baegipita dikotlo tše leso-me, mafelelong Farao o ile a tlogela Baisiraele ba sepela. Ka morago Baegipita ba ile ba ba rakediša. Eupša Jehofa o ile a phološa Baisiraele ka go dira gore Farao le madira a gagwe ba kgangwe ke meetse Lewatleng le Lehwebidu.—Psalme 136:15.

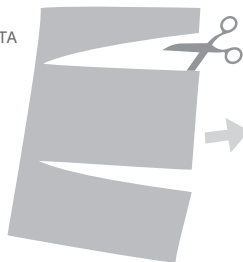
## DIKARABO

**A.** Jehofa.

**B.** Maaka. Farao o be a 'ikgogomoša.'

**C.** Thololo ya leru.

PHRINTA



E SEGE



E MENE KA BOGARE



KE MOKA O E BOLOKE

