

Faro (1513 B.C.E.)

FARO (1513 B.C.E.)

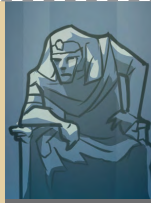
KARATA YA BAEBELE
33



DIPOTSO

- A.** Faro o ne a botsa jaana: “_____ ke mang, gore nka utlwa lentswe la gagwe?”—Ekesodo 5:1, 2.
- B.** Boammaaruri kgotsa maaka? Faro e ne e le monna yo o boikokobetso.—Ekesodo 9:13, 17.
- C.** Ke eng se se neng se le fa gare ga masole a ga Faro le bothibebele jwa Baiseraele kwa Lewatleng le Lehibidu?—Ekesodo 14:19, 20.

Mo e ka mang ka 98 C.E. | 1 C.E. | O sule ka 1513 B.C.E. | 4026 B.C.E. | Adame o a bopiwa



Ba ne ba lelekisa Baiseraele mme ba swela mo Lewatleng le Lehibidu

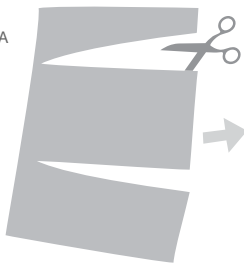
FARO

DINTLHA KA GA GAGWE Faro o ne a gana go reetsa Jehofa fa a mo raya a re a lese Baiseraele ba tsamaye. Kgabagare, fa Jehofa a sena go itaya Egepeto ka dipetso di le lesome, Faro o ne a letla Baiseraele ba tsamaya. Moragonyana, Baegepeto ba ne ba ba lelekisa. Mme Jehofa o ne a sireletsa Baiseraele ka go dira gore Faro le masole a gagwe ba nwele mo Lewatleng le Lehibidu.—Pesalema 136:15.

DIKARABO

- A.** Jehofa.
- B.** Maaka. Faro o ne a “itshwere ka mabela.”
- C.** Pilara ya leru.

PRINTA



SEGOLOLA



MENA KA BOGARE



O BO O E BOLOKE

