

# Siphora

KARATA YA  
BAEBELE

34



## DIPOTSO

- A.** Siphora le bomorwadiarraagwe ba ne ba bua jaana ka Moshe: “O ne a ba a re gela metsi gore a nose \_\_\_\_.”—Ekesodo 2:19.
- B.** Boammaaruri kgotsa maaka? Rraagwe Siphora e ne e le moperesiti.—Ekesodo 2:16, 21.
- C.** Ke bomang ba ba neng ba ngongoregela gore Moshe o nyetse Siphora, “mosadi wa Mokushe”?—Dipalo 12:1.

Mo e ka nngang  
ka 98 C.E.

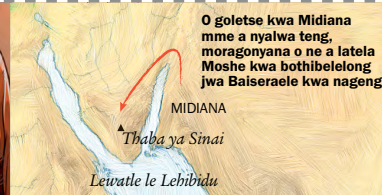
1 C.E.

Go kwalwa ga  
buka ya bofelo  
ya Baebele

O ne a tshela mo e ka  
nngang ka 1550 B.C.E.

4026 B.C.E.

Adame o  
a bopiwa



O goletse kwa Midiana  
mme a nyalwa teng,  
moragonyana o ne a latela  
Moshe kwa bothibelelong  
jwa Baiseraele kwa nageng

MIDIANA

Thaba ya Sinai

Lewatle le Lebibidu

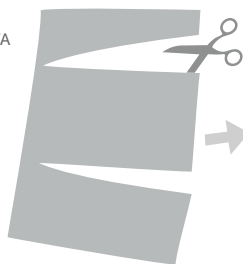
## SIPHORA

**DINTLHA KA GA GAGWE** Siphora e ne e le mosadi wa ga Moshe. Ba kopane kwa sedibeng sa Midiana kwa Moshe a neng a bontsha Siphora le bomorwadiarraagwe bopelonomi jo bogolo gone. Fa Siphora a sena go nyalana le Moshe, o ne a tshola barwa ba babedi ba ba bidiwang Gereshome le Eliesere.—Ekesodo 18:2-4.

## DIKARABO

- A.** Letsomane.
- B.** Boammaaruri.
- C.** Miriame le Arone.

PRINTA



SEGOLOLA



MENA KA BOGARE



O BO O E BOLOKE

