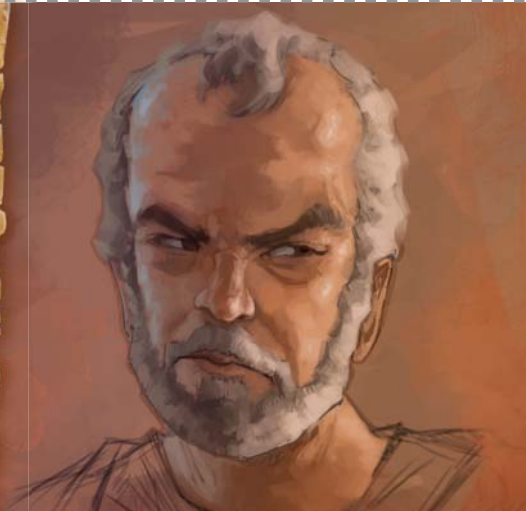


Kola

YẸDIDE KOLA

35



KANBIỌ LẸ

A. Taidi Mose, akọ tẹ mẹ wẹ Kola wá sọn? —Osọha lẹ 16:8.

B. Devi Jesu tọn Juda, na avase gando “hodido _____ Kola tọn” go.—Juda 11.

C. Mọwẹ kavi lala? Taidi otọ yetọn, visunnu Kola tọn lẹ siatẹ sọta Mose po Aalọn po bosọ kú to pọmẹ hẹ Kola.—Osọha lẹ 26:10, 11.

Nudiwhe 98 W.M.

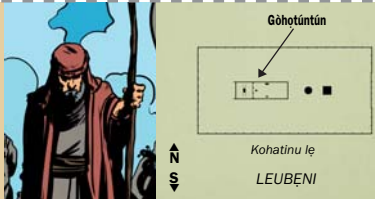
Owe he gọngodo to Biblu mẹ yin kinkan

Owe he 1 W.M.

Kola rogbe to nudi 1500 J.W.M.

4026 J.W.M.

Adam yin dida



KOLA

OTÀN Kola wá sọn whendo Kohatinu lẹ tọn mẹ. Ewọ, Datani po Abilami po siatẹ sọta Jehovah to whenue yé dionukunsọ Mose po Aalọn po to danfafa ji. Kola po sunnu 250 devo lẹ po mẹ nuwhẹnwẹn to gòhọtuntún mẹ. Jehovah hù yé nado dohia dọ Aalọn doponọ wẹ dona sẹn taidi yewhenọ daho to Israeli. —Osọha lẹ 16:1-50.

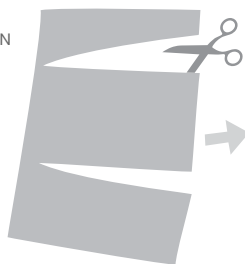
GBLỌNDO LẸ

A. Levi.

B. Atẹsişi.

C. Lala.

ZÍN IN TỌN



SÁN ẸN



YẸN ẸN DO AWE



BO SẸ Ẹ DO

