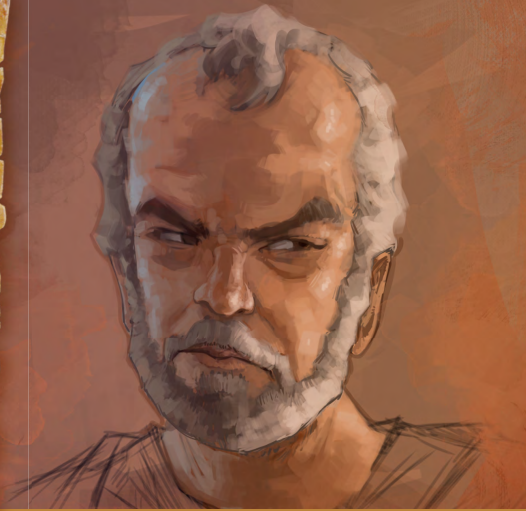


Kora

KARETE
EA
BIBELE

35



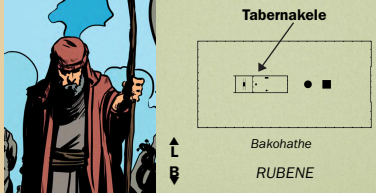
Hoo e ka bang ka
1 C.E. 98 C.E.

Buka ea ho qetela ea
Bibele ea ngoloea

O phetse lilemong tsa
bo-1500 B.C.E.

4026 B.C.E.

Adama oa
bopitloa



Tabernakele

Bakohathe
RUBENE

Litente tsa Kora
(Mokohathe) le
tsa Dathane le
Abirame
(Barubene) li ne
li le ka boroa ho
tabernakele

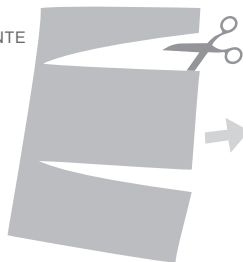
K O R A

PALE EA HAE EA BOPHELO Kora e ne e le Mokohathe. Eena le Dathane le Abirame ba ile ba hlanohela Jehova ha ba ne ba hlomphe-lla Moshe le Arone lefeelleng. Kora le banna ba 250 ba ile ba chesa libano tabernakeleng. Jehova o ile a ba bolaea e leng se neng se bontša hore ke Arone feela ea nang le tokelo ea ho sebeletsa e le moprista ea phahameng oa Iseraele.—Numere 16:1-50.

LIKARABO

A. Levi.
B. Borabele.
C. Bohata.

E PRINTE



E SEHE



E MENE



'ME U E BOLOKE

