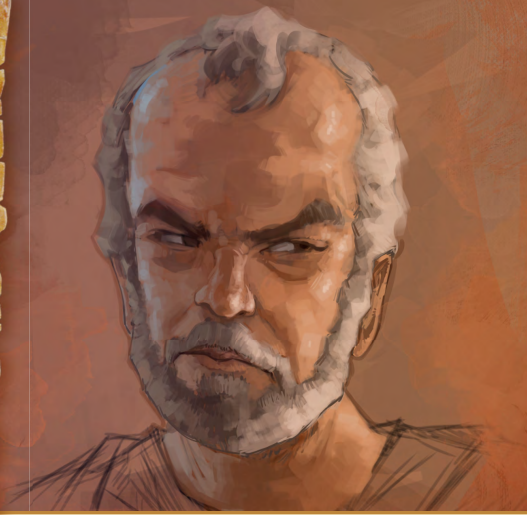


Kora

KORA

35 KARATA YA BAEBELE



DIPOTSO

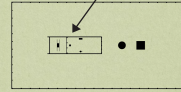
- A.** Kora le Moshe e ne e le ba lotso lofe? —Dipalo 16:8.
- B.** Morutwa wa ga Jesu, e bong Jude, o ne a tlhagisa ka 'puo ya _____ ya ga Kora.'—Jude 11.
- C.** Boammaaruri kgotsa maaka? Fela jaaka rraabone, bomorwa Kora ba ne ba tsuologela Moshe le Arone mme ba swa le Kora.—Dipalo 26:10, 11.

1 C.E. Ka bo 98 C.E.

Go kwalwa ga bulka ya bofelo ya Baebele



Motlaagana



RUBENE

Mogope wa ga Kora (Mokohathe), wa ga Dathane le wa ga Abirame (Barubene) e ne e le kwa borwa jwa motlaagana

KORA

DINTLHA KA GA GAGWE Kora e ne e le Mokohathe. Ene, Dathane le Abirame ba ne ba tsuologela Jehofa ka go ema kgathlanong le Moshe le Arone kwa nageng. Kora le banna ba feta 250 ba ne ba isa maswalo kwa motlaaganeng. Jehofa o ne a ba bolaya, ka go dira jalo a bontsha gore Arone ke ene fela yo o neng a tshwanetse go nna moperesiti yo mogolo wa Iseraele.—Dipalo 16:1-50.

DIKARABO

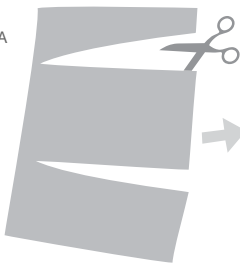
- A.** Lefi.
- B.** Botsuolodi.
- C.** Maaka.

4026 B.C.E.

O tshetse mo e ka n nang ka 1500 B.C.E.

Adame o a bopiwa

PRINTA



SEGOLOLA



MENA KA BOGARE



O BO O E BOLOKE

