

# Rahabu

## RAHABU

KAKKAA-  
DI KAMU  
BBAIBBE-  
LE  
36

### MIBUZYO

- A.** Ino zisiko zyabutonje Rahabu mwaakasisa basikutwela zyakali kuli?—Joshua 2:6.
- B.** Rahabu wakajisi lusyomo lwakuti Jehova “ngu Leza \_\_\_\_\_ aano.”—Joshua 2:11.
- C.** Masimpe naa nkubeja? Rahabu wakali umwi wabamakaapanyina ba Mwami Davida.—Matayo 1: 5, 6.



Kuma 98 C.E.

1 C.E.

4026 B.C.E.

Bbuku lyama-nino lyamu Bbaibbele lyalemwa

Wakazyalwa kautanasika mwaka wa 1473 B.C.E.

Adamu walengwa



Wakaambila basikutwela bana Israyeli kuti bayube mumalundu kabatanapilika ku Sitimu

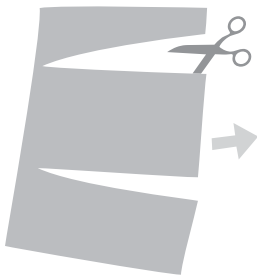
## RAHABU

**MAKANI AAJATIKIZYA NGUWE** Rahabu wakatambula basikutwela bobilo bana Israyeli murjanda yakwe ku Jeriko. Wakatondezya lusyomo ndwaakajisi muli Jehova kwiinda mukubasisa basikutwela, akubalomba kuti bakaukwabilile mukwasyi wakwe alimwi akuti wakali kuyakwaa-tobela malailile aabo. Bulambo bwa Jeriko nobwakawa, Rahabu amukwasyi wakwe bakatalika kukkala abana Israyeli.—Joshua 6:25.

### BWIINGUZI

- A.** Aciluli
- B.** Wakujulu; aansii.
- C.** Masimpe.

AMUSIMBE



AMUTENDULULE



AMUKAWWUNGE AKATI



ALIMWI AKUKAYOBOLA

