

Rahabi

RAHABI



**KHADI
LONENA
ZA
36**

MAFUNSO

A. Kodi mapesi a fulakesi omwe Rahabi anabisa azondi anali kuti?—Yoswa 2:6.

B. Rahabi ankakhulupirira kuti Yehova “ndiye Mulungu wa _____ ndi _____ lapansi.”—Yoswa 2:11.

C. Zoonu kapena zonama? Rahabi anali agogo a Mfumu Davide.—Mateyu 1:5, 6.

Cha m'ima 98 C.E.


1 C.E.

Buku lomaliza la m'Baibulo linalembedwa

Anabadwa chaka cha 1473 B.C.E. chisanafike.

4026 B.C.E.

Kulengedwa kwa Adamu



Anauza azondi ochokera ku Israeli kuti akabisale kumapiri asanabwerere ku Sitimu

RAHABI

ANALI NDANI? Rahabi anabisa m'nyumba mwake azondi awiri ochokera ku Israeli. Iye anasonyeza kuti ankakhulupirira Yehova chifukwa anabisa azondiwa, anawapempha kuti adzapulumutse iyeyo pamodzi ndi anthu a m'banja mwake komanso anatsatira malangizo awo mosamala. Mzinda wa Jericho utawonongedwa, Rahabi ndi anthu a m'banja mwake ankakhala ndi Aisraeli.—Yoswa 6:25.

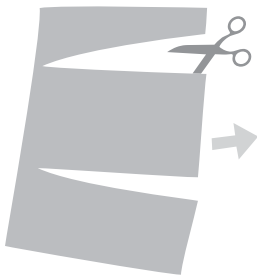
MAYANKHO

A. Padenga.

B. Kumwamba; padziko.

C. Zoonu.

SINDIKIZANI



DULANI



PINDANI PAKATI



SUNGANI

