

Lehaba

KIPIKICALA LEHABA

36



MEPUZHO

- A.** Kwepi kwajinga bukusa Lehaba mo afiile baendejile kyalo?—Yoshua 2:6.
- B.** Lehaba waketekejile'mba Yehoba “ye Lesa wa _____ ne pano pa _____.” —Yoshua 2:11.
- C.** Kine nyi bubela? Mfumu Davida wajinga mukanununa wa kwa Lehaba.—Mateo 1:5, 6.

Mu ma 98 C.E. 1 C.E. 4026 B.C.E.

Buku wapeleleko kuntemba
Wasemekelwe 1473 B.C.E. saka ikyang'ye kufika

Adama walengwa



Wabujile bena Isalela baendejile kyalo kufyama mu mitumba saka bakyangye kubwelamo ku Shitima

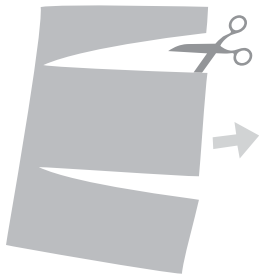
LEHABA

BWIKALO Lehaba watambwijile bena Isalela babiji mu nzubo yanji mu Yeliko bayile na kwendela kyalo. Wamwesheshe Iwitabilo Iwanji mwi Yehoba byo afiile bano banabalume ne kwibambila'mba bakazhikijile kisemi kyanji kabiji walondejile mikambizho yonse yo bamwambijile. Lubumbulu wa Yeliko byo aponene, Lehaba ne kisemi kyanji baikelenga na bena Isalela.—Yoshua 6:25.

MIKUMBU

- A.** Pa musemi.
- B.** Mwiulu; ntanda.
- C.** Kine.

PULINTAI



CHIBAI



CHIMPAI PAKACHI



KABIJI LAMAI

