

# Rahaba

## RAHABA

LOKASA

36

### MITUNA

- A.** Mwa banzete ya lini oyo na nse na yango Rahaba abombaki banongi ezalaki wapi? —Yosua 2:6.
- B.** Rahaba andimaki ete Yehova “azali Nzambe kuna na \_\_\_\_\_ mpe awa na \_\_\_\_\_, na nse.”—Yosua 2:11.
- C.** Solo to lokuta? Rahaba azalaki nkoko ya Mokonzi Davidi.—Matai 1:5, 6.



Mobu soki 98 T.B.

1 T.B.

Mokanda ya nsuka ya Biblia ekomami

Abotamaki liboso ya mobu 1.473 L.T.B.

4026 L.T.B.

Adama akelami

Ayebisaki Bayisraele oyo bayaki kononga Yeriko bámibomba na bangomba liboso bazonga na Shitime

Yeriko

Shitime

Yordani

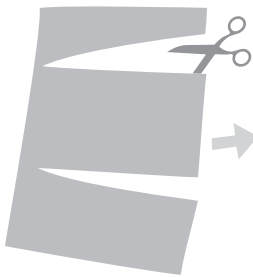
## R A H A B A

**NA MOKUSE** Rahaba ayambaki na ndako na ye Bayisraele mibale oyo bayaki kononga Yeriko. Amonisaki kondima epai ya Yehova na ndenge abombaki bato yango, asengaki bango bábikisa libota na ye, mpe alandaki malako nyonso oyo bapesaki ye. Ntango efelo ya Yeriko ekweaki, Rahaba ná bato ya ndako ya tata na ye bakómaki kofanda na Yisraele. —Yosua 6:25.

### BIYANO

- A.** Na nsamba.
- B.** Likoló; mabele.
- C.** Solo.

IMPRIMER



KATÁ



GUMBÁ NA MIBALE



MPE BOMBÁ

