

Releehabe

BAEBOLO RELEEHABE
KAADE

36



KPUYA

- A.** Ndile ne mɔɔ Releehabe vale hedale busiama ne anwo zo la ɛnee wo nɪ?—Dwohyua 2:6.
- B.** Releehabe nyianle diedi kɛ Gyihova “le Nyamenle wo _____ lo nee _____ ye azo.”—Dwohyua 2:11.
- D.** Ole nohale anzɛɛ ole adale? Ɛnee Releehabe le Belemgbunli Devidi nana.—Mateyu 1:5, 6.

Keye 98 Y.M.

1 Y.M.

4026 K.Y.M.

Behelɛ
buluku mɔɔ
li awileɛ

Bewole ye kolaa 1473 K.Y.M.

Bɛbole
Adam

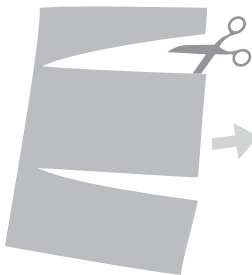
R E L E E H A B E

Ɔ NWO EDWƐKƐ Releehabe liele Yizilaye busiama nwio ne wo ye sua nu wo Gyeleko. Ohilele kɛ ɔle Gyihova anu diedi ɔlua busiama ne mɔɔ ɔvale bɛ ɔziele la azo, ɔzelele bɛ kɛ bebo ye abusua ne anwo bane na ɔbali bɛ adehilele zo pɛpɛpɛ. Meke mɔɔ Gyeleko bane ne bule guale la Releehabe nee ye abusua ne nee Yizilayema hodɛnlanle.—Dwohyua 6:25.

MUALƐ

- A.** Sua ne ati zo.
- B.** Anwuma; azelɛ.
- D.** Ole nohale.

PELENTE



PƐ



BU NU NWIO



NA FA SIE

