

Rahaba

RAHABA

KARATA YA
BEIBELE

36



DIPOTŠIŠO

- A.** Mahlaka a lodi ao Rahaba a bego a utile dihlo-di go ona a be a le kae?—Joshua 2:6.
- B.** Rahaba o be a na le tumelo ya gore Jehofa “ke Modimo kua _____ magodimong le _____ lefaseng.”—Joshua 2:11.
- C.** Therešo goba maaka? Rahaba e be le makgo-lokhukhu-khukhu wa Kgoši Dafida.—Mateo 1:5, 6.

Mo e ka bago ka
98 C.E.

1 C.E.

4026 B.C.E.

Puku ya mafele-
lo ya Beibele e
ya ngwalwa

O belegwe pele ga 1,473 B.C.E.

Adama o a
bopša



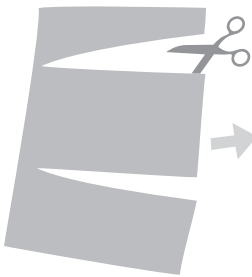
RAHABA

KANEGELO YA BOPHELO BJA GAGWE Rahaba o ile a amogela dihlo-di tše pedi tša Baisiraele lapeng la gagwe kua Jeriko. O ile a bontšha tumelo go Jehofa ka go uti dihlo-di tšeo a ba a kgopela gore di phološe lapa la gagwe go latela ditaelo tša tšona gabotse. Ka morago ga gore merako ya Jeriko e phušoge, Rahaba le lapa labo ba ile ba dula le Baisiraele.—Joshua 6:25.

DIKARABO

- A.** Hlakeng.
- B.** Godimo; tlase.
- C.** Therešo.

PHRINTHA



E SEGE



E MENE KA BOGARE



GOMME O E BOLOKE

