

Rahabi

RAHABI

KADI

36



MAFUMBO

- A.** Kasi mapekesi gha fulakisi agho Rahabi wakabisa mathenga ghakaŵa nkhu?—Joshuwa 2:6.
- B.** Rahabi wakagomezga kuti Yehova “ni Chiuta mu mtambo _____ na pa _____ kusi.”—Joshuwa 2:11.
- C.** Unenesko panji utesi? Rahabi wakaŵa gogo mulara wa Themba Davide.—Mateyu 1:5, 6.

M'ima 98 C.E.

1 C.E.

Wakababika pembere chaka cha 1473 B.C.E. chindakwane.

4026 B.C.E.

Adamu wakalengeka



Wakaphalira mathenga gha Israyeli kuti ghakabisame ku mapiri pambere ghandawelere ku Shitimu

Jeriko

Shitimu

Yordani

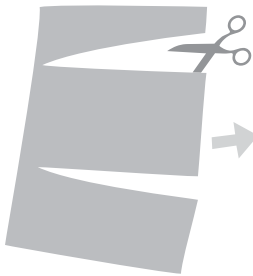
RAHABI

MBIRI YAKE Rahabi wakakhalanga ku Jeriko, ndipo wakapokelera ŵanalume ŵawiri awo ŵakafuma ku Israyeli. Wakagomezganga Yehova, lekani wakabisa ŵanalume ŵawiri aŵa. Wakaŵa-pempha kuti ŵazakaponoske ŵamubanja lake, kweniso kuti wapulikirenge vyose ivyo ŵamuphalirenge. Pamanyuma pakuti viliŵa vya Jeriko vyawa, Rahabi na banja lake ŵakapona ndipo ŵakakhala lumoza na Ŵaisrayeli.—Joshuwa 6:25.

MAZGORO

- A.** Pa mtenje.
- B.** Kuchanya; charu chapasi.
- C.** Unenesko.

PURINTANI



CHEKETANI



PINDANI PAKATI



NA KUSUNGA

