

Rahabe

RAHABE

KARATA YA BAEBELE

36

DIPOTSO

- A.** Lotlhaka lwa leloba lo Rahabe a neng a fitlhile dithola mo go lone lo ne lo le kae?—Joshua 2:6.
- B.** Rahabe o ne a na le tumelo ya go re Jehofa “ke Modimo kwa _____ kwa godimo le mo _____ fa tlase.”—Joshua 2:11.
- C.** Boammaaruri kgotsa maaka? Rahabe e ne e le mmèmogogolwane wa ga Kgosi Dafide.—Mathaio 1:5, 6.



Ka bo 98 C.E.

1 C.E.

4026 B.C.E.

Go kwalwa ga buka ya boelo ya Baebete

O tshotswe pele ga 1473 B.C.E.

Adame o a bopiwa



O ne a bolelela Baiseraele go re ba ye go iphitlha kwa dithabeng pele ba boela kwa Shitime

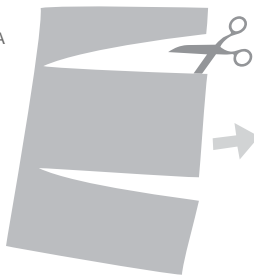
R A H A B E

DINTLHA KA GA GAGWE Rahabe o ne a amogela dithola tse pedi tsa Baiseraele kwa ntlong ya gagwe kwa Jeriko. O ne a bontsha gore o na le tumelo mo go Jehofa ka go fitlha dithola, ka go ba kopa gore ba sireletse ba lelapa la gagwe le go latela ditaelo tsa bone. Fa Jeriko e se na go sennngwa, Rahabe le ba gaabo ba ne ba nna le Baiseraele.—Joshua 6:25.

DIKARABO

- A.** Mo borulelong.
- B.** Magodimong; lefatsheng.
- C.** Boammaaruri.

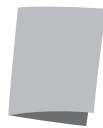
PRINTA



SEGOLOLA



MENA KA BOGARE



O BO O E BOLOKE

