

# Ebee Ka Ndị Nwụrụ Anwụ Gara? (Nkebi nke 1)

O si n'isi nke 6 n'akwụkwọ *Gịnị n'Ezie Ka Bible Na-akụzi?* Ọ dịkwa na [jw.org/ig](http://jw.org/ig).

**IHE I GA-EJI AKWỤKWỌ A EME:** Jiri ya chọpụta ihe ndị i kweere na ihe mere i ji kwere na ha. Jirikwa ya mata ihe Baịbụl na-akụzi na otú i nwere ike isi kọwaara ya ndị ọzọ.



## Ò NWERE EBE MMADỤ NA-AGA MA Ọ NWỤỌ?

### 1 CHỌPỤTA IHE NDỊ I KWEERE

Gịnị ka ndị ọzọ nwere ike ikwu?

---

---

Gịnị ka **gịnwa** kweere?

---

---

Gịnị mere i ji kwere ihe a i kweere?

---

---

## 2 LEE IHE BAIBUL NA-AKUZỊ

### Anyị nwụọ, anyị na-akwụsi idi ndụ.

(Gụọ isi nke 6 n'akwụkwọ *Bible Na-akuzi*, paragraf nke 1-6.)

#### Gụọ Ekliziastis 9:5, 10.

Olee ihe amaokwu ndị a kwuru nke gosiri na anyị enweghị mkpụrụ obi na-anaghị anwụ anwụ?

---

---

---

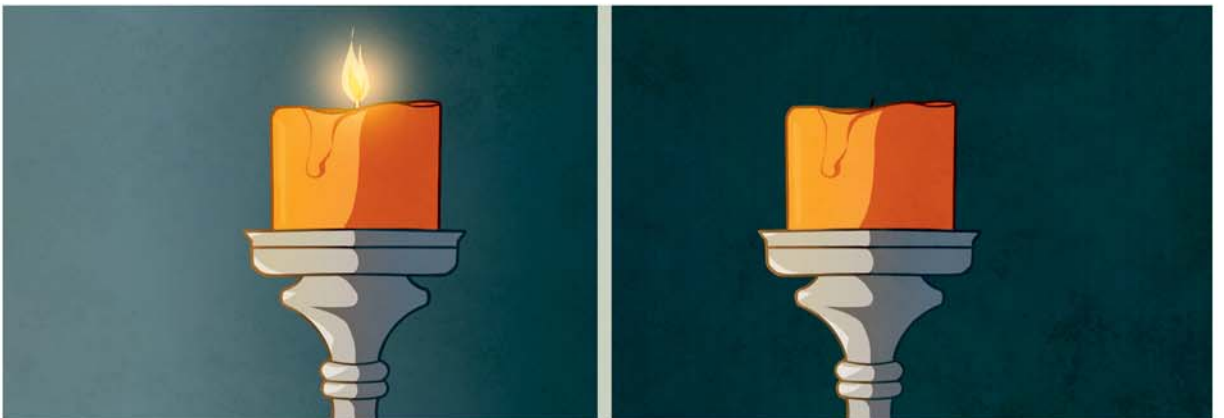
Olee ihe atụ ị ga-eji kọwaara mmadụ na mmadụ nwụọ, ọ naghị adị ndụ ebe ọzọ?

---

---

---

---



Ọ bụrụ na a fụnyụọ ọkụ, o nweghị ebe ọ *na-aga*. Ọ nyụọla. Otú ahụ ka ọ dị mmadụ ma ọ nwụọ. Mmadụ nwụọ ọ nwụchaala. Ọ naghị aga ebe ọzọ biri

# Ọnwụ dị ka ebe mmadụ nọ n'oké ụra n'arọghị nro ọ bụla.

(Gụọ isi nke 6 n'akwụkwọ *Bible Na-akụzi*, paragraf nke 7 na nke 8.)

## Gụọ Jọn 11:1-14.

Gịnị ka i chere mere Jizọs ji jiri ọnwụ tūnyere ụra?

---

---

---

---

## Gụọ Ọrụ Ndịozị 7:60 na 1 Ndi Kọrint 15:6.

Olee ihe amaokwu Akwụkwọ Nsọ ndị a kwuru nke gosiri na ọnwụ dị ka ụra?

---

---

---

---

Olee uru imata ihe na-eme mmadụ ma ọ nwụọ baara gị?

---

---

---

---

# 3

## OTÚ ! GA-ESI AKỌWA IHE NDỊ I KWEERE

Ọ BỤRỤ NA MMADỤ ASI...

**Mkpurụ obi mmadụ anaghị anwụ anwụ ma onye ahụ nwụọ.**

I NWERE IKE !S! ONYE AHỤ...

**Ọtụtụ okpukpe na-akuzi na mkpurụ obi anaghị anwụ anwụ. Ma ekwetaghị m n'ihì na...**

---

---

Olee amaokwu Baịbụl i nwere ike igurụ onye ahụ?

---

Ebe ọ bụ na i matala ihe onye ahụ kweere, olee otú i ga-esi jiri amaokwu Baịbụl ahụ nyere ya aka?

---

Ọ BỤRỤ NA MMADỤ ASI...

**Chineke na-ata ndị ajọ omume ahụhụ n'ọkụ ala mmụọ.**

I NWERE IKE !S! ONYE AHỤ...

**Ama m na Chineke ga-egbu ndị ajọ omume. Ma ekwetaghị m na ọ na-ata ha ahụhụ n'ọkụ ala mmụọ n'ihì na...**

---

---

Olee amaokwu Baịbụl i nwere ike igurụ onye ahụ?

---

Ebe ọ bụ na i matala ihe onye ahụ kweere, olee otú i ga-esi jiri amaokwu Baịbụl ahụ nyere ya aka?

---