

# Baswi ba Kae? (Karolo 1)

E theilwe mo kgaolo 6 ya buka ya *Totatota Baebele e Ruta Eng?* e e gone mo [jw.org/tn](http://jw.org/tn).

**BOIKAELELO:** Go tihatlhoba se o se dumelang le lebaka la go bo o se dumela, go sekaseka se Baebele e se rutang le kafa o ka tihalosetsang ba bangwe se o se dumelang ka gone.



## GO DIREGA ENG KA RONA FA RE SWA?

### 1 TLHATLHOBA SE O SE DUMELANG

O akanya gore batho ba bangwe ba ka reng?

---

---

Wena o dumela eng?

---

---

Goreng o dumela seo?

---

---

# 2

## SEKASEKA SE BAEBELE E SE RUTANG

### Fa re swa, ga re tlhole re le teng. (Bala kgaolo 6 ya buka ya *Baebele e Ruta Eng* serapa 1-6.)

#### Bala Moreri 9:5, 10.

Ditemana tseo di bontsha jang gore ga re na moya o o sa sweng?

---

---

---

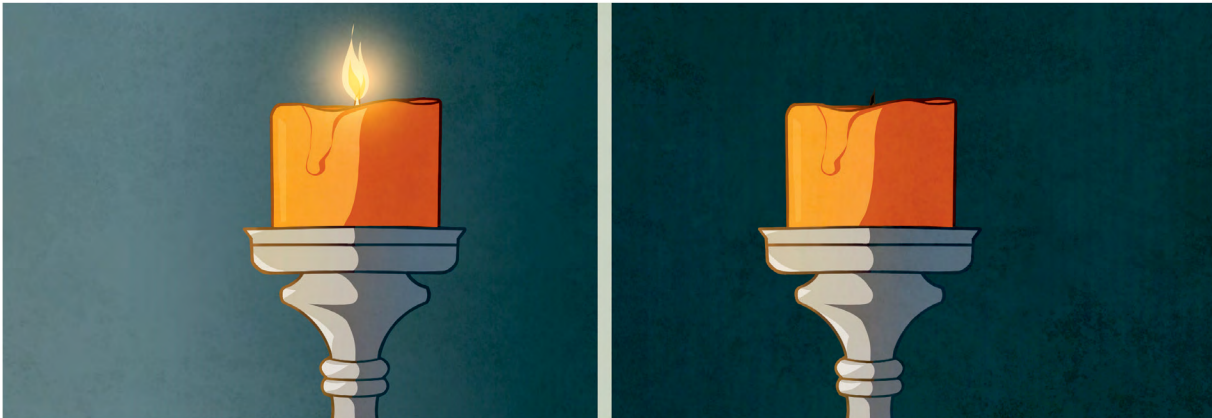
O ka tshwantsha jang gore fa motho a swa ga a tlhole a le teng?

---

---

---

---



**Fa kgabo e timilwe, e a nyelela. Ka jalo, fa motho a swa, ga a tlhole a le teng**

# Loso lo tshwana le boroko jo bogolo o sa lore.

(Bala kgaolo 6 ya buka ya *Baebele e Ruta Eng* serapa 7 le 8.)

## **Bala Johane 11:1-14.**

O akanya gore ke eng fa Jesu a ne a tshwantsha loso le go ikhutsa?

---

---

---

---

## **Bala Ditiro 7:60 le 1 Bakorintha 15:6.**

Ditemana tseno di bontsha jang gore loso lo tshwana le boroko?

---

---

---

---

Ke eng se o se itumelelang ka go itse se tota se diregang fa re swa?

---

---

---

---

# 3

## TLHALOSA SE O SE DUMELANG

FA MONGWE A RE...

**Fa motho a swa moya o tswelela o tshela.**

O KA RE...

**Dikereke tse di ntsi di ruta sengwe se se tshwanang le seo. Mme nna ga ke dumalane ka gone...**

---

---

O ka bontsha motho yoo temana efe?

---

O ka tlhalosa temana eo jang o akantse ka tsela e motho yoo a lebang dilo ka yone?

---

FA MONGWE A RE...

**Modimo o otlhaya batho kwa molelong wa dihele.**

O KA RE...

**Ke boammaaruri gore Modimo o tla otlhaya batho ba ba sa siamang. Mme ga ke dumele gore o ba otlhaya kwa molelong wa dihele ka gone...**

---

---

O ka bontsha motho yoo temana efe?

---

O ka tlhalosa temana eo jang o akantse ka tsela e motho yoo a lebang dilo ka yone?

---