

Bakuphi Abafileyo? (Ingxenye 1)

Sisekelwe esahlukweni 6 sencwadi ethi *Lifundisani Ngempela IBhayibheli?* etholakalayo engosini ethi jw.org/zu.

INJONGO: Hlola lokho okukholelwayo nokuthi kungani ukukholelwa, hlola lokho okufundiswa iBhayibheli futhi ubone ukuthi ungazichaza kanjani izinkolelo zakho kwabanye.



KWENZEKANI KITHI LAPHO SIFA?

1 HLOLA IZINKOLELO ZAKHO

Ucabanga ukuthi abanye bangathini?

Yini wena oyikholelwayo?

Kungani ukukholelwa lokho?

2

HLOLA LOKHO OKUFUNDISWA IBHAYIBHELI

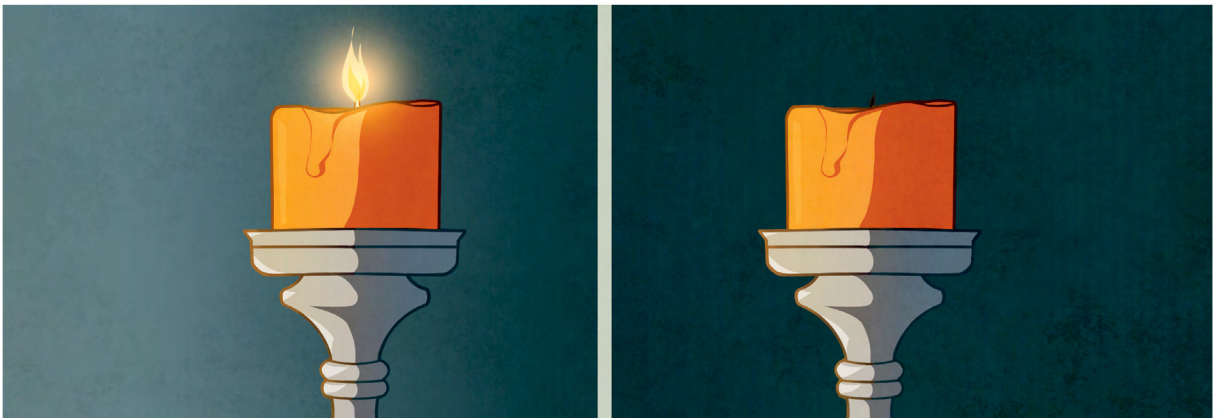
Lapho sifa, asibe sisaba khona.

(Bheka isahluko 6 sencwadi ethi *Okufundiswa IBhayibheli*, izigaba 1-6.)

Funda umShumayeli 9:5, 10.

Lawo mavesi abonisa kanjani ukuthi asinawo umphefumulo ongafi?

Ungakufanekisa kanjani ukuthi lapho umuntu efa, *akayi* ndawo kodwa futhi akabe esaba khona?



Lapho ilangabi licinywa *aliyi* ndawo—lisuke lingasekho. Ngokufanayo, lapho umuntu efa akaqhubeki ephila ngandlela-thile—akabe esaba khona

Ukufa kufana nobuthongo obungenamaphupho.

(Bheka isahluko 6 sencwadi ethi *Okufundiswa IBhayibheli*, izigaba 7, 8.)

Funda uJohane 11:1-14.

Uma ucabanga, kungani uJesu afanisa ukufa nokuphumula?

Funda izEnzo 7:60 neyoku-1 Korinte 15:6.

Lawo mavesi abonisa kanjani ngokwengeziwe ukuthi ukufa kufana nokulala?

Kungani ukujabulela ukwazi okwenzekayo ngempela lapho sifa?

3

CHAZA IZINKOLELO ZAKHO

UMA UMUNTU ETHI . . .

Umphefumulo uyaqhubeka uphila ngemva kokufa.

UNGASE UPHENDULE . . .

Izinkolo eziningi zifundisa into efana naleyo. Kodwa engikukholelwayo kuhlukile ngoba . . .

Imuphi umBhalo ongawufunda nalowo muntu?

Ukhumbula ukuthi umbono wakhe uyini ngale ndaba, ungabonisana kanjani naye usebenzisa lowo mBhalo?

UMA UMUNTU ETHI . . .

UNkulunkulu ujezisa abantu ababi esihogweni somlilo.

UNGASE UPHENDULE . . .

Kuyiqiniso ukuthi uNkulunkulu uzobajezisa abantu ababi. Kodwa angikukholelwa ukuthi ubahlupha esihogweni somlilo ngoba . . .

Imuphi umBhalo ongawufunda nalowo muntu?

Ukhumbula ukuthi uyini umbono wakhe ngale ndaba, ungabonisana kanjani naye usebenzisa lowo mBhalo?
