

Naomi

NAOMI

KHADI LA M'BAIBULO

37



MAFUNSO

- A.** Kodi Naomi anapempha anzake kuti azimutchula dzina liti, pamene mwamuna wake ndi ana ake aamuna awiri atamwalira?—Rute 1:20.
- B.** Naomi ananena kuti Yehova “sanaleke kusonyeza ___ ___ kwa amoyo ndi akufa.”—Rute 2:20.
- C.** Zoonza kapena zonama? Naomi anakwatiwa kwa Boazi.—Rute 4:13.

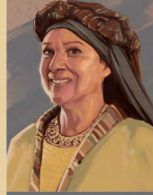
1 C.E. Cha m'ima 98 C.E.

Anakhalaapo cha m'ima 1200 B.C.E.

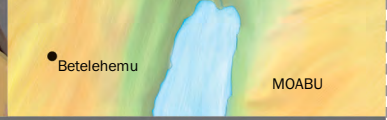
4026 B.C.E.

Buku lomaliza la Baibulo linalimbetwa

Kulengekwa kwa Adamu



Anachoka ku Betelehemu kupita ku Moabu kenako anabwereranso ku Betelehemu



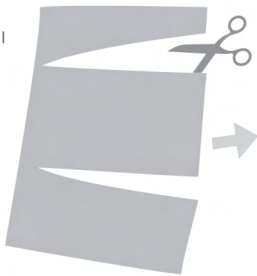
NAOMI

ANALI NDANI? Nthawi yomwe ku Betelehemu kunali njala, Naomi ndi banja lake anasamukira ku Moabu. Koma mwamuna wake ndi ana ake aamuna awiri atamwalira, Naomi anabwerera ku Betelehemu ndi mpongozi wake Rute. Mpongozi wakeyu ankamupezera chakudya ndipo Naomi anathandiza Rute kuti azolowere moyo wa ku Betelehemu ndiponso kuti akwatiwe.—Rute 2:17, 18; 3:1-4.

MAYANKHO

- A.** Mara.
- B.** Kukoma mtima kosatha.
- C.** Zabodza. Rute anakwatiwa kwa Boazi.

SINDIKIZANI



DULANI



PINDANI



NDI KUSUNGA

