

Naomi

NAOMI

BIBLIA
MLI SANE
37



SANEBIMƆ

- A.** Ye Naomi wu ke ebihii enyo le agbele see le, msee gbɛi Naomi kee enanemei le ketse le? —Rut 1:20.
- B.** Naomi kee Yehowa “hako ___ see afo ye hiekaloɪ ke gbohii fee ano le.”—Rut 2:20.
- D.** Anɔkwale loo amale? Naomi ke Boaz hi shi. —Rut 4:13.

Aafi 1, D.J.B. Aaafee afi 98 D.J.B.

Naagbee Biblia mli wolo ni arɔma

Ehi shi aafee afi 1,200 D.J.B.

Afi 4026 D.J.B.

Abo Adam



Eshi Betlehem ketee Moab, no see le, eba Betlehem ekonɔ

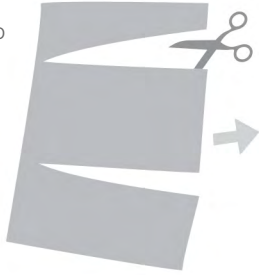
NAOMI

EHE SANE KUKU Be ni homo ko ba Betlehem le, Naomi ke eweku le shi ketee Moab. Ye Naomi wu ke ebihii enyo le agbele see le, Naomi ke eshaayoo Rut ku amesee ketee Betlehem. Rut yabuaa niyenii naa kebahaa Naomi, ni Naomi hu ye ebuu Rut ni ebote gbalashihile mli ye jeme.—Rut 2:17, 18; 3:1-4.

HETOI

- A.** Mara.
- B.** Emobonale.
- D.** Amale. Rut ke Boaz hi shi.

PRINTIMO



FOO



DOO MLI ENYO



NI OKETO

