

## Gideoni

YẸDIDE  
GIDEONI

38

## KANBIỌ LẸ

**A.** To whenue Gideoni gídí agbà Baali tọn de godo, yinkọ tẹwẹ otọ etọn do na ẹn?—Whẹdatọ 6:32.

**B.** Gideoni dọmọ: “Whẹdo sie wẹ \_\_\_\_\_ to Manasse mẹ, yẹn wẹ sọ yin \_\_\_\_\_ pete to owhé otọ sie tọn gbẹ.”—Whẹdatọ 6:15.

**C.** Mọwẹ kavi lala? Gideoni gbẹ nado dugán do Islaeli ji.—Whẹdatọ 8:22, 23.



Nudi owhe 98 W.M.

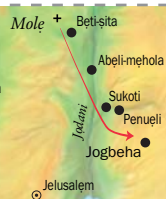
Owhe 1 W.M.

Gideoni yin jiji to  
owhe 1300 J.W.M. godo

4026 J.W.M.

Adam yin  
dida

E yangbé kento le  
ton kaka yi fie den na  
nudi kilomētu 80  
whepo do wle ahọlu  
Midiani ton awe



## GIDEONI

**OTÀN** Whẹdatọ nukundeji de to Islaeli, he whlẹn Islaelivi lẹ sọn aḷọ kento yetọn lẹ tọn mẹ. Gideoni whleawu to ojłẹ de mẹ, amọ e wá yí adọgbigbo do ganjẹ Jehovah go. Gideoni gba-whàn Midianinu lẹ, Amalekinu lẹ, po mẹhe nọ nọ Whẹzẹtẹn-waji lẹ po tọn, dile etlẹ yindọ awhànpa yetọn sù hú etọn whla 450.—Whẹdatọ lẹ 6:33, 34; 8:28.

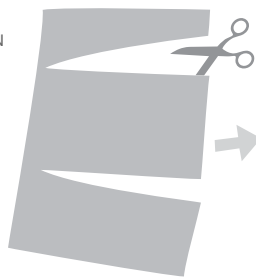
## GBLỌNDO LẸ

**A.** Jelubbaali.

**B.** Hẹntọno pete; mẹwhiwe.

**C.** Mọwẹ.

ZÍN IN TỌN



SÁN ẸN



YẸN ẸN DO AWE



BO SẸ Ẹ DO

