

Gidione

GIDIONE

KARATA YA BAEBELE 38



DIPOTSO

- A.** Fa Gidione a sena go senya sebeso sa ga Baale, rraagwe o ne a mo naya leina lefe? —Baatlhodi 6:32.
- B.** Gidione o ne a re: “Sekete sa me ke sone se ____ thata mo go tsa Manase, mme ke nna yo ____ thata mo ntlong ya ga rre.”—Baatlhodi 6:15.
- C.** Boammaaruri kgotsa maaka? Gidione o ganne go nna kgosi ya Iseraele.—Baatlhodi 8:22, 23.

Ka bo98 C.E.

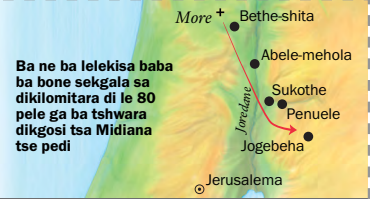
1 C.E.

4026 B.C.E.

Go kwalwa ga buka ya bofelo ya Baebele

O tshetse morago ga 1300 B.C.E.

Adame o a bopiwa



Ba ne ba lelekisa baba ba bone sekgala sa dikilomitara di le 80 pele ga ba tshwara dikgosi tsa Midiana tse pedi

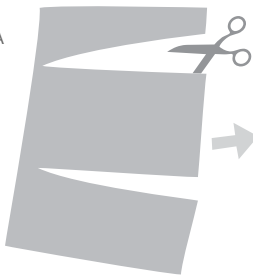
GIDIONE

DINTLHA KA GA GAGWE Moatlhodi yo o tlhomogileng yo o ileng a sireletsa Baiseraele kgathlanong le baba ba bone. Le fa Gidione e ne e le motho yo o kelotlhoko, o ne a bontsha bopelokgale ka go ikaega ka Jehofa. Masole a ga Gidione a ne a fenya le fa lesole le le lengwe le ne le tshwanelwa ke go lwa le masole a le 450 a Bamidiana, a Baamaleke le a Bothaba. —Baatlhodi 6:33, 34; 8:28.

DIKARABO

- A.** Jerubaale.
- B.** Sebotlana; mmotlana.
- C.** Boammaaruri.

PRINTA



SEGOLOLA



MENA KA BOGARE



O BO O E BOLOKE

