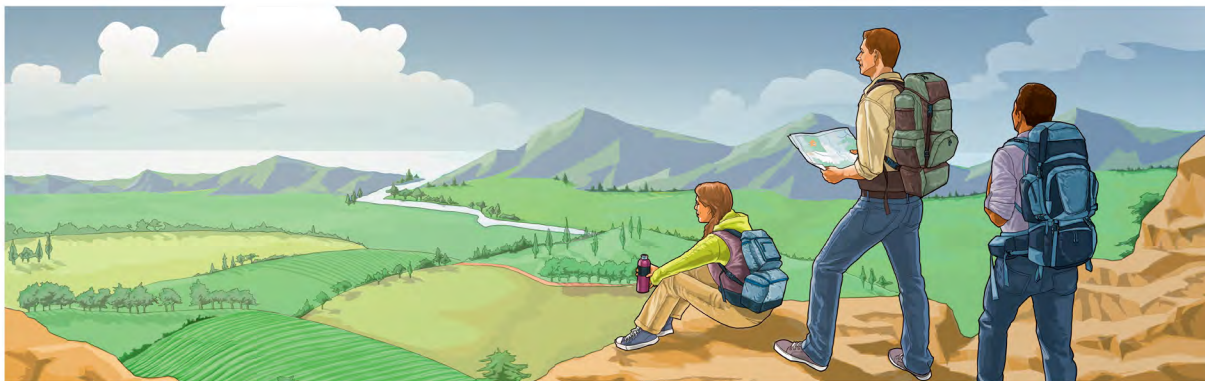


Ino Bwami bwa Leza Ninzi? (Cibeela 2)

Ciyeeeme acibalo 8 mubbuku lya *Ino Ncinzi Cini Bbaibbele Ncoliyiisya?* nkolili a jw.org/toi.

MAKANZE: Amulange-lange nzyomusyoma akuzyiba ikaambo ncomuzisyoma, amulange-lange ncoliyiisya Bbaibbele, akubona mbomukonzya kupandulwida bamwi nzyomusyoma.



INO NCINZI NCOBUYOOCITA BWAMI BWA LEZA?

1 AMULANGE-LANGE NZYOMUSYOMA

Ino ncinzi bamwi ncobakonzya kwaamba?

Ino *nywebo* ncinzi ncomusyoma?

Nkaambo nzi ncomusyoma boobo?

2

AMULANGE-LANGE NCOLIYIISYA BBAIBBELE

Bwami bwacita kale zintu zibotu kapati. (Amubone cibalo 8 mubbuku lya *Bbaibbele Ncoliyiisya*, muncali 11-13.)

Amubale Ciyubunuzyo 12:7-10.

Ino ncinzi ncaakasaanguna kucita Jesu naakaba Mwami wa Bwami bwa Leza?

Amubale Ciyubunuzyo 12:12.

Ciindi Saatani naakatandwa, ino ncinzi cakacitika anyika alimwi nkaambo nzi ncokwakaba luumuno akusekelela kujulu? (Kaambo kagwasya: Alimwi amubale Ciyubunuzyo 12:10b.)



Bwami bwa Leza bwakapa kuti kujulu kube lukkomano lupati, ino-ino buyakupa kuti aalo anyika kube lukkomano lupati

Bantu boonse ibasyomeka bayoogwasyigwa a Bwami.

(Amubone cibalo 8 mubbuku lya *Bbaibbele Ncoliyiisya*, muncali 14-23.)

Amubale Mukambausi 8:9 and Daniele 2:44.

Ino mbuti Bwami mbobuyakubumana bweendelezi bwabantu bwalunya?

Amubale Intembauzyo 37:29 alimwi a Ciyubunuzyo 22:1-3.

Ino ncinzi ciyocitika kumalwazi alimwi alufwu ciindi Bwami nobunakweendelezya?

Ino nzintu nzi nzyomulangila kuyocita munyika mpya?

3

AMUPANDULULE NZYOMUSYOMA

IKUTI NAA UMWI WAAMBA KUTI . . .

Bwami bwa Leza ncintu cili mumoyo wamuntu.

MULAKONZYA KWAAMBA KUTI . . .

Bantu banji balakonzya kukazuminizya kaambo aako. Pele mebo tandisyomi oobo nkaambo . . .

Ino ndugwalo nzi ndomukonzya kubelesya kumuntu ooyu?

Kwiinda mukubikkila maano nzyaamba muntu, mbuti mbomukonzya kulupandulula lugwalo oolo?

IKUTI NAA UMWI WAAMBA KUTI . . .

Mbwaanga Bwami buli kujulu kunyina mbobotugwasya swebo notuli anyika.

MULAKONZYA KWAAMBA KUTI . . .

Masimpe kuti Bwami buli kujulu. Pele ndisyoma kuti bulabujatikizya buumi bwesu akaambo kakuti . . .

Ino ndugwalo nzi ndomukonzya kubelesya kumuntu ooyu?

Kwiinda mukubikkila maano nzyaamba muntu, mbuti mbomukonzya kulupandulula lugwalo oolo?
