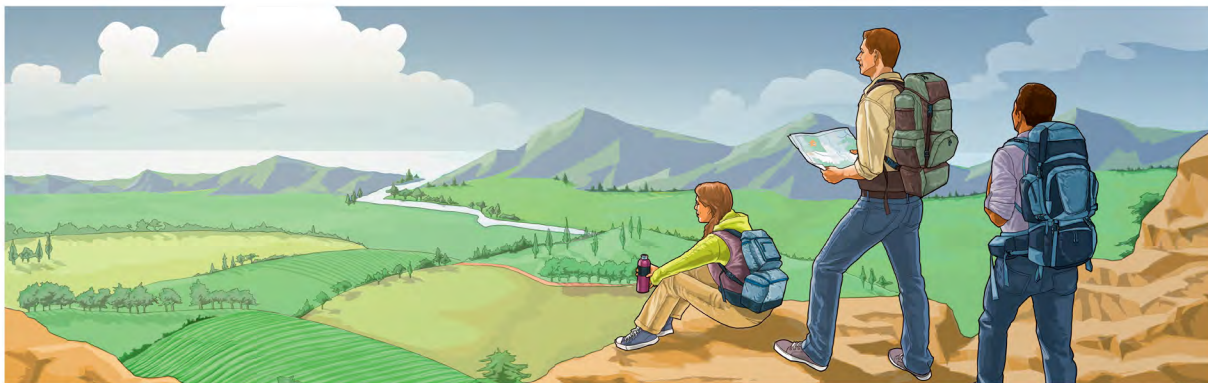


Meni Ji Nyɔŋmɔ Maŋtseyeli Le? (Fã 2)

Edamɔ *Meni Biblia le Tsoo Diენტse?* wolo le, yitso 8 le no, eye jw.org/gaa le no.

YIŊTOO NI YOO SƐƐ: Taomɔ no ni oheɔ oyeɔ le mli ke no hewɔ ni oheɔ oyeɔ le, peimɔ no ni Biblia le tsoo ye he le mli koni ona bo ni obaagbala ohemɔkeyeli le mli otsɔɔ mei.



MENI NYOŊMɔ MAŊTSEYELI LE BAATSU?



TAOMɔ NIBII NI OHEɔ OYEɔ LE AMLI

Meni osusuo ake mei komei baakee?

Meni oheɔ oyeɔ?

Meni hewɔ oheɔ no oyeɔ?

Maɲtseyeli le etsu nibii komɛi ni sa kadimo momo.
(Kwemo Biblia le Tsoo wolo le, yitso 8 kuku 11-13.)

Kanemo Kpojiemo 12:7-10.

Be ni Yesu batso Nyɔŋmo Maɲtseyeli le no Maɲtse le, meni ji nibii ni efee klenklen le aten eko?

Kanemo Kpojiemo 12:12.

Be ni ashe Satan afɔ le, meni ba shikpon le no, ni meni hewo toinjole ke miishɛɛ ba nwei le?
(No ni baawa bo: Saamo Okane Kpojiemo 12:10b.)



Nyɔŋmo Maɲtseyeli le ehã miishɛɛ kple eba nwei momo; etsen, ebaahã miishɛɛ aba shikpon nɛɛ no hu

Maɲtseyeli le he baaba sɛenamɔ kɛhã gbɔmɛi fɛɛ.

(Kwɛmɔ Biblia le Tsɔɔ wolo le, yitso 8 kuku 14-23.)

Kanemɔ Jajelɔ 8:9 kɛ Daniel 2:44.

Mɛɛ gbɛ no Maɲtseyeli le baatso ɛkpãta gbɔmɛi anoyelii ni yitseian wala le ahie?

Kanemɔ Lala 37:29 kɛ Kpojiemɔ 22:1-3.

Mɛni baaba hela kɛ gbele no ye Maɲtseyeli noyeli le shishi?

Mɛɛ nibii komɛi okpaa gbɛ akɛ obaafɛɛ ye jɛɲ hee le mli?

3

TSOJOMO OHEMOKKEYELI LE MLI

KÉ MO KO KEE...

Nyɔŋmo Maŋtseyeli le ji no ko ni yɔɔ gbɔmo tsui mli.

OBAANYE OHĀ HETOO AKE...

Ekole, mei babaoo ke bo baakpa gbee ye no ni owie nee he. Shi mihie susumo kroko, ejaake...

Mee ηmale obaanye oke mo le asusu he?

Amro nee ni obale mo le susumo le, mee gbe no obaatsɔ oke le asusu nakai ηmale le he?

KÉ MO KO KEE...

Akeni Maŋtseyeli le ye ηwei hewo le, ehe be sɛɛnamo ko kehā gbɔmei ni yɔɔ shikpɔŋ le no le.

OBAANYE OHĀ HETOO AKE...

Eji anɔkwale ake Maŋtseyeli le baaje ηwei eye no. Shi miheɔ miyeɔ ake ehe ye sɛɛnamo waa kehā wɔ, ejaake...

Mee ηmale obaanye oke mo le asusu he?

Amro nee ni obale mo le susumo le, mee gbe no obaatsɔ oke le asusu nakai ηmale le he?
