

Manowa

MANOWA

KHADI
LONENA ZA

39



MAFUNSO

- A.** Kodi mngelo amene analankhula ndi mkazi wa Manowa ananena kuti Samisoni adzapulumutsa Aisiraeli kwa ndani?—Oweruza 13:5.
- B.** Manowa anapemphera kuti: “Lolani kuti munthu wa Mulungu woona amene munam’tuma, abwerenso kuti _____.”—Oweruza 13:8.
- C.** Zoonu kapena zonama? Manowa anakonzera mngeloyo chakudya.—Oweruza 13:15, 16, 19.

1 C.E. Cha m’ma 98 C.E.

Buku lomaliza la m’Baibulo linatembedwa

Anakhaleko chisanafike chaka cha 1120 B.C.E.

4026 B.C.E.

Adamu analengedwa



Ankakhala ku Zora. Atamwalira anakidwa manda a pakati pa Zora ndi Esitaoli

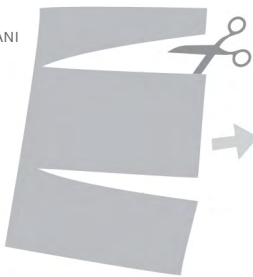
MANOWA

ANALI NDANI? Manowa anali bambo wake wa Samisoni yemwe anali woweruza. Mngelo atauza mkazi wa Manowa kuti abereka mwana wamwamuna, Manowa anapemphera kuti Mulungu adzatumthandize kuti alere bwino mwana wake Samisoni. “Mulungu woona anamvetsera mawu a Manowa” ndipo mngeloyo anabwerezanso malangizo amene anali atauza kale mkazi wa Manowa. Anauza Manowa ndi mkazi wake zimene ayenera kuchita posamalira mwana wawo, yemwe anakhala Mnaziri.—Oweruza 13:8-14.

MAYANKHO

- A.** Afilisiti.
- B.** Adzatilangize.
- C.** Zonama. Anapereka nsembe yopsereza kwa Yehova.

SINDIKIZANI



DULANI



PINDANI PAKATI



SUNGANI

