


Manoa

MANOA

KAADI AKUKO BAIBUL

39



AJỤJỤ

A. Mmụọ ozi ahụ bjakwutere nwunye Manoa gwara ya na Samsin ga-anaputa ndị Izrel n'aka ole ndi?—Ndi Ikpe 13:5.

B. Manoa kpere ekpere, si: “Onye nke ezi Chineke ahụ i zitere, biko, ya bjakwute anyi ozọ ma _____ ihe anyi ga-eme.”—Ndi Ikpe 13:8.

CH. Manoa siiri mmụọ ozi ahụ nri. Eziokwu ka ọ bụ ugha?—Ndi Ikpe 13:15, 16, 19.

Ihe di ka afọ 98 O.N.K.


Mgbe e dechara Baibul

Afọ 1 O.N.K.

Q diji ndu tupu afọ 1120 T.O.N.K.

4026 Tupu Oge Ndi Kraist

Mgbe e kere Adam



MANOA

ONYE Ọ BỤ Manoa bụ nna Samsin bụ Onyeikpe. Mgbe mmụọ ozi gwachara nwunye Manoa na ọ ga-amụ nwa nwoke, Manoa kpere ekpere ka Chineke gwa ya otú ha ga-esi azụ Samsin. ‘Ezi Chineke gere ntị n’olu Manoa.’ Mmụọ ozi ahụ biaghachiri gwa Manoa ihe niile ahụ o bu ụzọ gwa nwunye ya. Ọ gwara ha otú ha ga-esi zụọ nwa ha ga-abụ onye Naziraịt.—Ndi Ikpe 13:8-14.

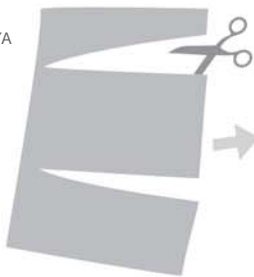
AZỊZA

A. Ndi Filistia.

B. Gwa anyi.

CH. Ugha. Ọ chụrụ Jehova àjà nsure oku.

BIPUTA YA



CHAKAPUTA YA



PIAJIE YA ABỤO



MA DOWE YA

