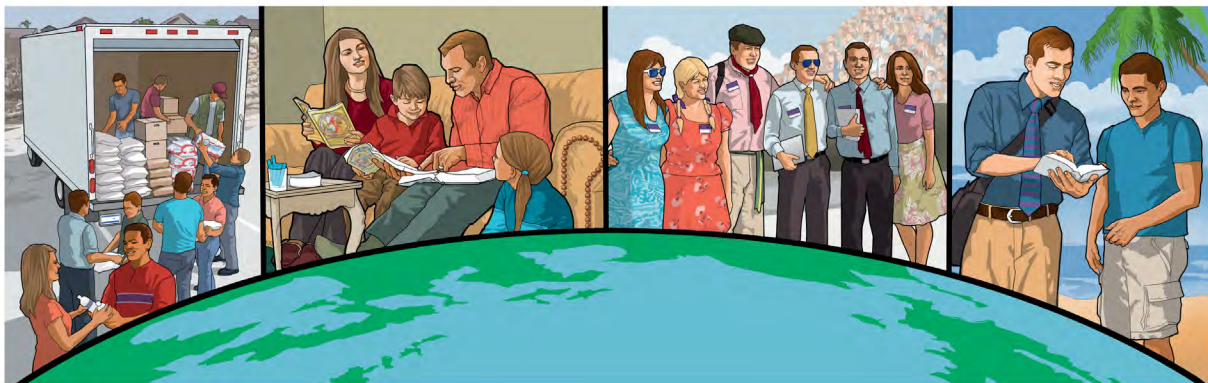


# “Ɔkeke Mamlɛawo” Mee Miele Nyatefea? (Akpa 2)

Wotui ɔe *Nuka Tututue Nye Biblia Ɔe Nufiafia?* gbalɛa Ɔe ta 9 lia dzi, ele [jw.org/ee](http://jw.org/ee).

**TADODZINU:** Be naɔe Ɔugble le nu siwo dzi nɛxɔ se kple susu siwo tae nɛxɔ wo dzi se la Ɔu, naɔu nya si Biblia gblɔ tso wo Ɔu la Ɔuti, eye naɔkɔ ale si naɔe wɔ dzixɔsewo me na amewo.



## ƉE BIBLIA GBLO NYA NYUI AƉE TSO “ƆKEKE MAMLɛAWO” ƆUA?—2 Timoteo 3:1.

### 1 DZRO WÒ DZIXɔSEWO ME

Nu ka tae ame aɔewo aɔo nya sia Ɔu be, ao?

---

---

Nu ka tae ame aɔewo aɔo nya sia Ɔu be, ɛ?

---

Ke aleke wò Ɔuto naɔo nya sia Ɔui?

---

Nu ka tae nɛxɔe se nenema?

---

# 2

## DZRO BIBLIA FE NUFIAFIAWO ME

### Mawu fe Nya gblɔ nu nyui siwo ayi edzi le ŋkeke mamleawo me la ɔi. (Kpo Biblia fe Nufiafia gbalɛa ta 9 memama 12-14.)

#### **Xiɛ Daniel 12:4.**

Aleke mawunyakpukpui sia ɔee fia be sidzedze vavãto adzi ɔe edzi le Mawu fe amewo dome le ŋkeke mamleawo me?

---

---

---

#### **Xiɛ Mateo 24:3, 14 kple Nyadɔɔfia 7:9.**

Mɔ kawo nue gbefãdɔɔdo si wom Yehowa Ɖasefowo le la nye nya sia fe mevava le?

---

---

---



**Ne ŋkeke mamleawo wu enu la, Mawu awɔ nu siwo amegbetɔ aɔeke mate ŋu awɔ o la na mi**

# Nu nyuiwo adzo le ñkeke mamleawo fe nuwuwu megbe.

(Kpo Biblia fe Nufiafia gbalëa ta 9 memama 15-18.)

## XIë 2 Tesalonikatowo 1:6-9 kple Nyadefia 21:3-5.

Le ñkeke mamleawo megbe la, nu ka tae kuxi siwo me tom miele egbea nu ayi tegbee?

---

---

---

---

## XIë Luka 21:34-36.

Vi kae wòade na mi ne miele “ñudzo” le ñkeke mamleawo siawo me?

---

---

---

---

Nya siwo dze le nusrõgbalëvi sia me dometo kae de dzi fo na wò vevie?

---

---

---

---

### 3 ðE WÒ DZIXÓSEWO ME

NE AME AÐE GBLO BE . . .

**Amegbetowo ava tsrõ anyigba sia kenken gbe ðeka.**

ÀTE ÆJU AÐO EÏJU NË BE . . .

**Xexemenudzòdzowo na wòdze nenema ya. Gake mexoe se be womatsrõ anyigba la ða kenken o, elabe . . .**

---

---

Mawunyakpukpui kae nàte ñu axlẽ na amea?

---

Aleke nàte ñu aÐe mawunyakpukpui ma me na amea le nya si wògblo nu?

---

NE AME AÐE GBLO BE . . .

**Ne míele ñgo yim le nuwawowo ñuti nunya me, atikenutinunya kple mòÐanunutinunya me ko la, gbe ðeka míava kpo xexea me fe kuxiwo gbo.**

ÀTE ÆJU AÐO EÏJU NË BE . . .

**Enye nyatefe be amegbetowo yi ñgo le go siawo me ale gbegbe. Gake esuso vie Mawu awo nu siwo amegbetò aÐeke mate ñu awo o la na mí. Le kpòÐenju me, . . .**

---

---

Mawunyakpukpui kae nàte ñu axlẽ na amea?

---

Aleke nàte ñu aÐe mawunyakpukpui ma me na amea le nya si wògblo nu?

---