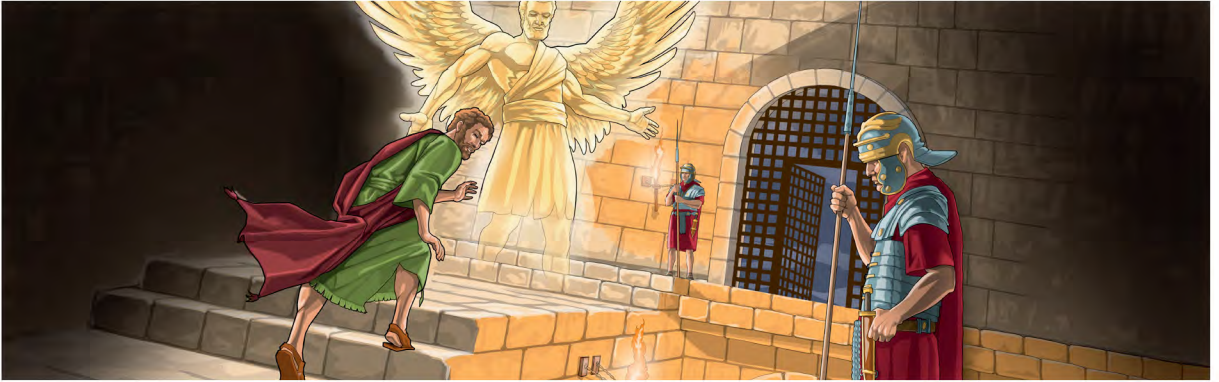


Anwumabɔvole Ne Mo Anwo Nɔhale Edweke (Foa 1)

Ɔgyi *Duzu A Baebolo Ne Kola Kilehile Ye A?* buluku ne tile 10 mɔɔ wo jw.org la azo.

BODANE: Neenlea mɔɔ edie edi nee deɛmɔti edie edi la anu, kpondɛ mɔɔ Baebolo ne kilehile la na nea kɛzi ebahola wɔahilehile wo diedi ne anu wɔahile awie mɔ la.



ANWUMABɔVOLEMA A LE NWANE Mɔ?



NEENLEA Wɔ DIEDI NE ANU

Duzu a menli bie mo baha a?

Boni a *edie* edi a?

Duzu ati a *edie* edi a?

Anwumabovolɛma le sunsum nu abodeɛ mƆƆ bɛɛ tumi, bɛze nreɛbɛ na bɛɛ nganeɛdeɛ a.

(Nea *Kilehile* Yɛ buluku ne tile 10, ɛdendekpunli 1-5.)

Kenga Dwobu 38:4-7, Edwɛndolɛ 103:20, nee Luku 15:10.

Kɛzi ngyɛnu ehye mƆ kile kɛ anwumabovolɛma le tumi, bɛze nreɛbɛ yɛɛ bɛɛ nganeɛdeɛ ɛ?

Kenga Danɛɛle 6:22 nee Gyima ne 12:6-11.

Kɛzi anwumabovolɛma mƆ di nohale la boale Nyamenle azonvolɛ wo tete ne ɛ?



Anwumabovolɛma di fɛɛko wo ɛtanenli ko bobo mƆƆ kɛzia kɛra Gyihova ɛkɛ la anwo.—Luku 15:10

Tɛ anwumabɔvolɛma amuala a di nɔhale a.

(Nea *Kilehile* Yɛ buluku ne tile 10, ɛdendɛkpunli 6-8.)

Kenga Yekile 12:9.

Kɛ mɔɔ ngyɛnu ɛhye kile la, asoo Seetan Abonsam angomekye a le anwumabɔvolɛ mɔɔ dele atua o?

Kenga Molebɛbo 6:2.

Kɛzi sunsum ɛtane ne mɔ dele atua tiale Nyamenle ɛ?

Kenga Edwɛndolɛ 34:7.

Saa ɛnwu ye kɛ Nyamenle dua ye anwumabɔvolɛma mɔɔ di nɔhale la anwo zo bɔ ye nwo bane fi anwumabɔvolɛma mɔɔ bekulo kɛ bɛɛkye ye wɔ sunsum nu la anwo a, kɛzi ɛte nganɛɛ ɛ?

3

KILEHILE WŌ DIEDI NE ANU

SAA AWIE KA KƎ . . .

Anwumabɔvolema ɛnle ɛkɛ a.

ƎBAHOLA WŌAHA KƎ . . .

Menli dɔɔnwɔ nee wɔ bays adwenle. Noko mɔɔ medie medi la le ngakyile ɔluakɛ . . .

Ngɛlɛlera boni a ɛbahola wɔava wɔaboa ahenle a?

Mekɛ mɔɔ ahenle edwekɛ ne wɔ ɛ ti anu la, kezɛ ɛ nee ye bazuzu ngɛlɛlera ne anwo ɛ?

SAA AWIE KA KƎ . . .

Metɛnwunle anwumabɔvole ɛle, yemɔti bɛnlɛ me ɛbɛlabɔle zo tumi a.

ƎBAHOLA WŌAHA KƎ . . .

Ɔle nɔhale kɛ anwumabɔvolema ɛnye bɛ nwo ɛngile alesama kɛ mɔɔ ɛnee ɔde ye wɔ Baebolo mekɛ nu la. Noko medie medi kɛ bɛle ye ɛbɛlabɔle zo tumi ɔluakɛ . . .

Ngɛlɛlera boni a ɛbahola wɔava wɔaboa ahenle a?

Mekɛ mɔɔ ahenle edwekɛ ne wɔ ɛ ti anu la, kezɛ ɛ nee ye bazuzu ngɛlɛlera ne anwo ɛ?
